

The logo for DMIC, featuring the letters 'D', 'M', and 'I' in red and 'C' in blue, with a white outline. The letters are superimposed over a glowing, semi-transparent globe of the Earth. The globe shows continents and oceans, and is surrounded by a soft, glowing aura. Below the globe, a blue wavy line suggests water or a path.

**DMIC**

A close-up photograph of a brass fitting, likely a pipe or hose connector, shown at an angle. The fitting has a threaded end and a smooth, cylindrical body. The background is a gradient of orange and yellow.

**SSW POWER  
UNIT LAYOUT SYSTEM**



# SSW POWER UNIT LAYOUT SYSTEM



## The Industry Accepted Standard in SAE/ISO/BSP Large Bore, Low Pressure Fluid Connections

*Due to our policy of continual product improvement, the specifications in this catalog may change without notice. When designing by spec, please request a certified print.*

For DMIC customers, "revolution" becomes EVOLUTION with an updated system of U.S. made valves and adapters that provide quality and uniformity improvements, support for international standards, and the superlative fit-and-finish of a system which has been conceived, solid-model CAD designed, and manufactured under one roof at our factory. Unlike others, DMIC manufactures the valves, adapters, and accessories to operate as a cohesive system that saves you engineering effort, production time, and labor requirements.

DMIC offers the progressive design house an expedient path to open systems designed around the latest ISO and SAE standards. Every adapter is dimensionally compatible across SAE, BSP, and ISO6149 threads. Available as "standards" that you can buy today.



### Socket Weld to Thread

**Connect imperial and metric threaded ports to Standard Pipe & Tube. Adapter prevents thermal damage to valves and contamination through absent welding. Swivel option allows precise angular alignment.**

|   |   |
|---|---|
| <b>SSW Swivel Socket Weld</b> , Socket Weld to Thread Inline..... | 7 |
| <b>FSW Fixed Socket Weld</b> , Socket Weld to Thread Inline ..... | 8 |



### Hose Barb to Thread

**The easy, leak proof way to connect suction hose to components via SAE/ISO/BSP Thread. Convenient 45° and 90° elbow models. Step size barb option allows designers to maintain nominal ID even through barb.**

|  |    |
|--|----|
| <b>HBL Hose Barb Low Pressure</b> , Suction Hose to Thread, Inline ..... | 9  |
| <b>BSE Barb Swivel Elbow</b> , Suction Hose to Thread 90° Elbow.....     | 10 |
| <b>EBS Barb Swivel Elbow</b> , Suction Hose to Thread 45° Elbow .....    | 11 |



### Hose Barb Specialty Adapters

**Designed in tandem with customer requests, these special purpose adapters allow you to connect suction/low pressure hoses where you need them. The ultimate convenience is the HBS Hose Barb Split Flange model. BBE and EBB terminate Pipe/Tube with prefabricated barb elbows.**

|   |    |
|---|----|
| <b>HBS Hose Barb Split</b> , Suction Hose to C.61 SF Head, Inline.....      | 12 |
| <b>SBE Split Barb Elbow</b> , Suction Hose to C.61 SF Head, 90° Elbow ..... | 13 |
| <b>ESB Split Barb Elbow</b> , Suction Hose to C.61 SF Head, 45° Elbow ..... | 14 |
| <b>BBE Butt Weld Barb Elbow</b> , to Sch. 40 Pipe, 90° .....                | 15 |
| <b>EBB Butt Weld Barb Elbow</b> , to Sch. 40 Pipe, 45° .....                | 16 |





## SAE Split Flange Adapters

Terminate an SAE/ISO/BSP Thread with an SAE Split Flange Head. Quick-order DMIC Split Flange Kits for a ready to use solution, available with choice of sealing and UNC/Metric Bolts.

|  |    |
|--|----|
| SFM C.61 Split Flange Head to Thread, Inline.....    | 17 |
| SSE C.61 Split Flange Head to Thread, 90° Elbow..... | 18 |
| ESS C.61 Split Flange Head to Thread, 45° Elbow..... | 19 |



## SAE 4-Bolt Companion Flanges

Ultimate flexibility in SAE Companion Flange Pad connections with UNC or optional Metric bolt holes. Choose SAE/ISO/BSP thread connection. An excellent way to bridge imperial to metric components.

|  |    |
|--|----|
| FMC C.61 4-Bolt Companion Flange to Thread, Inline.....    | 20 |
| SFC C.61 4-Bolt Companion Flange to Thread, 90° Elbow..... | 21 |
| ESC C.61 4-Bolt Companion Flange to Thread, 45° Elbow..... | 22 |



## SAE 4-Bolt Standard Flanges

SAE Flange Pad with through holes designed to accommodate both UNC and Metric fasteners. Swivel feature permits precise angular alignment of mating flange and/or valve, improving power unit quality and aesthetics.

|   |    |
|---|----|
| FMM C.61 4-Bolt Standard Flange to Thread, Inline.....    | 23 |
| SFE C.61 4-Bolt Standard Flange to Thread, 90° Elbow..... | 24 |
| ESF C.61 4-Bolt Standard Flange to Thread, 45° Elbow..... | 25 |



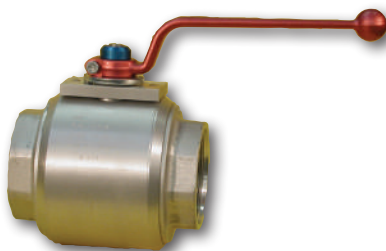
## Reservoir Layout Tools

DMIC Suction Line Simplifiers improve power unit suction line layout by providing EZ-weld pilot with internal strainer mounting point.

|  |    |
|--|----|
| SNS External Weld + Thread to Internal Thrd Simplifier, Inline.....    | 26 |
| SNE External Weld + Thread to Internal Thrd Simplifier, 90° Elbow..... | 27 |
| ESN External Weld + Thread to Internal Thrd Simplifier, 45° Elbow..... | 28 |
| CSN Series Reservoir Int-Ext Thread Downline, Adapters.....            | 29 |
| SVE Swivel to Swivel, Adapters.....                                    | 33 |

## Flat Weld Adapters with Thread and 4-Bolt Companion Pad Connections

|  |    |
|--|----|
| FCM Reservoir Flat Weld, C.61 Companion..... | 30 |
| SFW Swivel Flat Weld, Inline.....            | 31 |
| FFW Fixed Flat Weld, Inline.....             | 32 |



## BVALP/BVAL Low Pressure Ball Valves

DMIC's redesigned BVALP/BVAL has been designed to last with quality construction features and compatibility with most DMIC Pre-Engineered Accessories such as Actuation, Limit Switch Kits, and Security Locking Option.

|                                      |    |
|--------------------------------------|----|
| BVAL Low Pressure Ball Valve.....    | 34 |
| BVALP Low Profile Suction Valve..... | 35 |



# HOW TO ORDER SSW FLUID CONNECTORS

The designer has complete control over size,  
connections, materials, and sealing.

## For Easy Ordering, examples are provided below

To order standard adapters, simply replace "\*" in both blank spots, with the desired size code. Buyers of advanced adapters can override PORT SIZE, CONNECTION TYPE, and MATERIALS to achieve Step Size, Stainless Steel, and ISO Standard connections that precisely match the exact application. Available optional overrides for each product are in their respective Ordering Codes.

## Specify the port size and connection with a simple code

Order basic adapters by inserting two size codes. The Ordering Codes for each adapter model look similar to the example below:

SSW - \*\* W4 - \*\* S - 1 1

Decide on the adapter size (eg. 25 = 2 1/2"; see size code table below) and replace both "\*" with the necessary size codes:

SSW - 25 W4 - 25 S - 1 1

Because the adapter model determines the default end connections, you can still order standard adapters just by inserting the size part into the part number template.

25 W4

### Size Code

Expressed in 1/10ths of an inch. Select a valid size code from the Size Code Table.

### Connection Type

Select a valid connection type from the table printed with each adapter.

| Size Codes |           |
|------------|-----------|
| Code       | Port Size |
| 07         | 3/4"      |
| 10         | 1"        |
| 12         | 1 1/4"    |
| 15         | 1 1/2"    |
| 20         | 2"        |
| 25         | 2 1/2"    |
| 30         | 3"        |
| 40         | 4"        |
| 50         | 5"-Call   |
| 60         | 6"-Call   |

| Connection Types |                          |
|------------------|--------------------------|
| Imperial Threads |                          |
| Code             | Description              |
| S                | SAE ORB                  |
| N                | NPT                      |
| J                | JIC-M 37° Flare          |
| Metric Threads   |                          |
| Code             | Description              |
| B                | BSPP                     |
| T                | BSPT-special             |
| ISO Threads      |                          |
| Code             | Description              |
| IU               | ISO6149                  |
| IA               | ISO1179                  |
| SAE Flanges      |                          |
| Code             | Description              |
| FM/FL            | C.61 UNC 4-Bolt          |
| GM               | C.61 Metric 4-Bolt       |
| SM               | C.61 Split Flange Head   |
| Special Flanges  |                          |
| Code             | Description              |
| AA               | ANSI 150#                |
| DA               | DIN Flange               |
| Suction Hose     |                          |
| Code             | Description              |
| HB               | Hose Barb                |
| Weld Connections |                          |
| Code             | Description              |
| W4               | Socket Weld Sch. 40 Pipe |
| WB4              | Butt Weld Sch. 40 Pipe   |



# HOW TO ORDER SSW FLUID CONNECTORS

(Continued...)

## Overriding the Size Code of one "End" to specify a Step Size adapter

Order step size adapters by modifying the code up or down by one size.  
(For multi-size steps, please consult DMIC.)

**HBL** - **25** **HB** - **20** **S** - **1** **1**

This example specifies a **HBL Hose Barb to Thread** adapter that is 2½" on the Barb side and 2" on the SAE ORB side.

## Overriding the Adapter Material or Seal Elastomer using Construction Codes

The Construction Code allow the Buyer to specify optional adapter and sealing materials for special applications and media.

For standard adapters, there is no need to specify or change the construction code.

- **1** **1**

### Adapter Material

- 1: Low Carbon Steel (standard)
- 2: Stainless Steel
- 4: Aluminum (select models)

### O-Ring Elastomer

- 1: Buna-N (standard)
- 2: Ethylene Propylene
- 3: Viton Fluoropolymer

## Changing the Standard Adapter Configuration for Special Threads, Flanges, or Weld Connections

If a 2" SFM Split Flange to Thread adapter is needed, but instead of SAE ORB you would like ISO6149 male thread to SAE Split Flange:

SFM - 20 SM - 20 **S** - 1 1

**SFM** - **20** **SM** - **20** **IU** - **1** **1**

In the SFM example (directly above), change the "S", which specifies SAE ORB, to IU which specifies ISO6149. Many common ISO adapters ship from stock. Please verify pricing and delivery with a DMIC Sales Associate at time of order. We welcome your custom adapter request.



# BENEFITS OF DMIC SSW POWER UNIT LAYOUT SYSTEM

More Accurate, Reliable and Cost Effective

## Save Time in the Assembly Phase

Designers who spec the DMIC SSW Power Unit Layout System as the large bore fluid connection standard enjoy an immediate return on investment through minimal need for rework due to leakage and dimensional errors. Seldom does SSW not pay for itself on a power unit that uses it. That's why many major OEMs insist on DMIC SSW.

Power unit subsystems become more modular and repeatable because it's easy to lay out power unit lines and obtain layouts within tolerances.

## Keep it clean in the Weld Shop

DMIC's SSW Power Unit Layout System allows you to reduce flushing requirements and start-up filtration stress during commissioning. Weld spatter is restricted to the adapter components, sparing valves from exposure to potential thermal damage.

Systems with ambitious ISO cleanliness/"high beta" targets will most certainly attain the target more rapidly, as well as experience fewer element changes during initial start up.



## No Drips from Reservoir Leakage

Reservoir leakage is eliminated with an O-Ring sealed suction system from reservoir to pump inlet. Reduction of drips and cavitation troubles from conical thread connectors was a prime design goal when DMIC defined the ESAE standard in 1991. Today, you can engineer power units with O-Ring seal throughout in your choice of SAE, ESAE, ISO6149 and BSP.

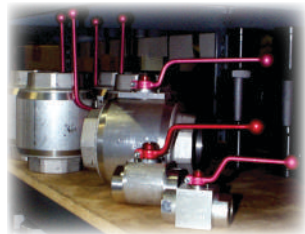


## Designed to Fit DMIC Ball Valves

DMIC Ball valves and SSW Power Unit Layout System adapters are made by the same craftsmen in the same factory in the USA. There is never a question of compatibility or fit.

When specifying a DMIC product, it may incorporate improvements that were not in the production channel when the catalog was printed. Running improvements are incorporated as a part of our continual product development.

**When designing by spec, please request a certified print.**



## Widest Choice of Configurations

DMIC is geared to deliver the widest range of Inline, 90° and 45° Elbow, Stainless Steel, Step Size, and custom configurations, often within hours of your order.

The DMIC factory protects and supports local Stocking Distributors with comprehensive inventory, direct line to in-house Technical Sales and Engineering, drop shipment capability, same-day shipping of most orders, and special and custom product capabilities for OEM volume and blanket orders.



## Protecting Your Investment

DMIC developed the SSW Power Unit Layout System at a time when top of the line power units routinely shipped with large bore connections in NPT.

Today, DMIC is at the forefront, working with dominant global standards organizations in promoting the establishment of non-proprietary large bore connection standards. You can be sure your investment in DMIC's SSW Power Unit Layout System today is supported in the long haul.



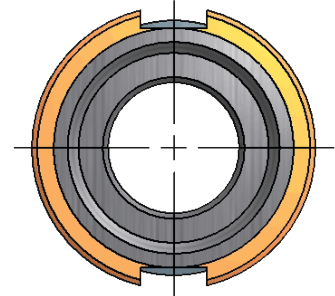
# SSW SWIVEL SOCKET WELD

## Pipe/Tube to SAE/ISO/BSP thread ~ Sizes from 3/4" to 6"

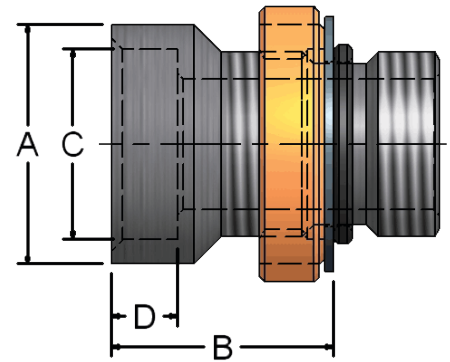
The **SSW** Swivel Socket Weld adapter is the namesake of the **SSW** product family. Available with SAE O-Ring, ISO6149 and BSP.



- **Swivel design with lock ring** permits precise alignment on threaded side after weld is complete.
- **Valves can be absent during welding** to eliminate contamination and heat damage
- Reduced skilled labor requirement and improved repeatability for all skill classes
- **Made in U.S.A.** for fast delivery and top quality
- Suction to 400 PSI



| SSW          |               | Socket Weld to SAE/ISO/BSP Thread, Swivel |               |      |      |      |      |
|--------------|---------------|---|---------------|------|------|------|------|
| Part Number  |               | Port Size                                 | Dimensions IN |      |      |      |      |
| SAE          | ISO-6149      |   | A             | B    | C    | D    | Lbs  |
| SSW-07W4-07S | SSW-07W4-07IU | 3/4"                                      | 1.38          | 1.27 | 1.09 | 0.38 | 0.40 |
| SSW-10W4-10S | SSW-10W4-10IU | 1"  | 1.63          | 1.28 | 1.35 | 0.38 | 0.40 |
| SSW-12W4-12S | SSW-12W4-12IU | 1 1/4"                                    | 2.00          | 1.40 | 1.70 | 0.38 | 0.70 |
| SSW-15W4-15S | SSW-15W4-15IU | 1 1/2"                                    | 2.25          | 1.40 | 1.95 | 0.38 | 0.80 |
| SSW-20W4-20S | SSW-20W4-20IU | 2"  | 2.75          | 1.40 | 2.41 | 0.38 | 1.20 |
| SSW-25W4-25S | SSW-25W4-25IU | 2 1/2"                                    | 3.38          | 1.46 | 2.91 | 0.38 | 1.80 |
| SSW-30W4-30S | SSW-30W4-30IU | 3"  | 4.00          | 1.65 | 3.54 | 0.50 | 2.50 |
| SSW-40W4-40S | SSW-40W4-40IU | 4"  | 5.00          | 1.65 | 4.54 | 0.50 | 3.30 |



## Ordering Codes

**SSW** - \*\* **W4** - \*\* **S** - **11**

| First Size Code |           |
|-----------------|-----------|
| Code            | Port Size |
| 07              | 3/4"-call |
| 10              | 1"        |
| 12              | 1 1/4"    |
| 15              | 1 1/2"    |
| 20              | 2"        |
| 25              | 2 1/2"    |
| 30              | 3"        |
| 40              | 4"        |
| 50              | 5"-Call   |
| 60              | 6"-Call   |

| Socket Weld Side |                          |
|------------------|--------------------------|
| Code             | Description              |
| W4               | Sch. 40 Pipe (standard)  |
| HT               | Hyd Tube (SAE J524 Type) |
| MP               | Metric Pipe              |
| MT               | Metric Tube              |

### Choose Adapter Size

Replace \*\* with the desired adapter size.

Two different size codes selects step size option.

| Second Size Code |           |
|------------------|-----------|
| Code             | Port Size |
| 07               | 3/4"-Call |
| 10               | 1"        |
| 12               | 1 1/4"    |
| 15               | 1 1/2"    |
| 20               | 2"        |
| 25               | 2 1/2"    |
| 30               | 3"        |
| 40               | 4"        |
| 50               | 5"-Call   |
| 60               | 6"-Call   |

| Thread Side |                    |
|-------------|--------------------|
| Code        | Description        |
| S           | SAE ORB (Standard) |
| IU          | ISO6149            |
| B           | BSP                |

| O-Ring Elastomer |                          |
|------------------|--------------------------|
| Code             | Description              |
| 1                | Buna-N (standard)        |
| 2                | Ethylene Propylene "EPR" |
| 3                | Viton                    |

| Adapter Material |                  |
|------------------|------------------|
| Code             | Description      |
| 1                | Low Carbon Steel |
| 2                | Stainless Steel  |

### Alternate Thread Standard

Replace "S" SAE ORB standard thread connection with a choice from the "Thread Side" Table. Please call to confirm price and availability.

### Alternate Weld Connection Standard

Replace the "W4" standard weld connection with a choice from the "Weld Side" table. Please call to confirm price and availability.

Due to our policy of continual product improvement, the specifications in this catalog may change without notice. When designing by spec, please request a certified print.



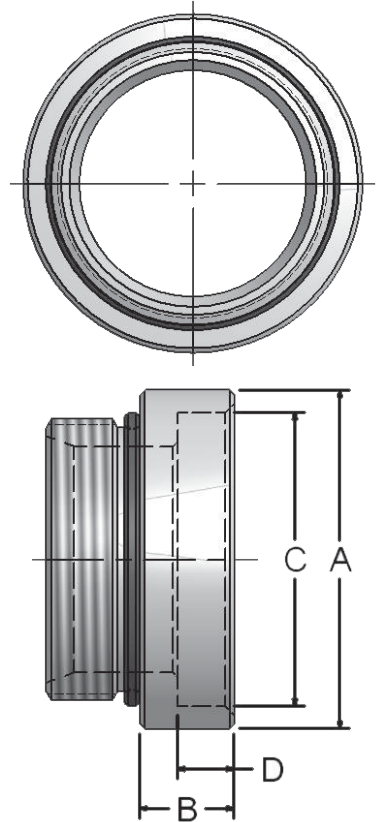
# FSW FIXED SOCKET WELD

Pipe/Tube to SAE/ISO/BSP thread ~ Sizes from ¾" to 6"



The **FSW** Fixed Socket Weld adapter provides the functionality of **SSW** without the swivel feature. For flat weld applications, see the complete array of Reservoir Weld adapters starting on page 26.

- Valves can be absent during welding to eliminate contamination and heat damage.
- Reduced labor requirement and improved repeatability result in better quality power units
- Made in U.S.A. for fast delivery and top quality in sizes up to 6". (Suction to 400 PSI)



| FSW          |               | Socket Weld to SAE/ISO/BSP Thread, Non-Swivel |               |      |      |      |      |
|--------------|---------------|---|---------------|------|------|------|------|
| Part Number  |               | Port Size                                     | Dimensions IN |      |      |      | Lbs  |
| SAE          | ISO-6149      |   | A             | B    | C    | D    |      |
| FSW-07W4-07S | FSW-07W4-07IU | ¾"  | 1.38          | 0.63 | 1.09 | 0.38 | 0.20 |
| FSW-10W4-10S | FSW-10W4-10IU | 1"  | 1.63          | 0.63 | 1.35 | 0.38 | 0.20 |
| FSW-12W4-12S | FSW-12W4-12IU | 1¼"   | 2.00          | 0.63 | 1.70 | 0.38 | 0.30 |
| FSW-15W4-15S | FSW-15W4-15IU | 1½"   | 2.25          | 0.63 | 1.95 | 0.38 | 0.40 |
| FSW-20W4-20S | FSW-20W4-20IU | 2"  | 2.75          | 0.63 | 2.41 | 0.38 | 0.60 |
| FSW-25W4-25S | FSW-25W4-25IU | 2½"   | 3.38          | 0.63 | 2.91 | 0.38 | 0.90 |
| FSW-30W4-30S | FSW-30W4-30IU | 3"  | 4.00          | 0.75 | 3.54 | 0.50 | 1.30 |
| FSW-40W4-40S | FSW-40W4-40IU | 4"  | 5.00          | 0.75 | 4.54 | 0.50 | 2.10 |

## Ordering Codes

**FSW** - \*\* **W4** - \*\* **S** - 1 1

| O-Ring Elastomer |                          |
|------------------|--------------------------|
| Code             | Description              |
| 1                | Buna-N (standard)        |
| 2                | Ethylene Propylene "EPR" |
| 3                | Viton                    |

| First Size Code |           |
|-----------------|-----------|
| Code            | Port Size |
| 07              | ¾"        |
| 10              | 1"        |
| 12              | 1¼"       |
| 15              | 1½"       |
| 20              | 2"        |
| 25              | 2½"       |
| 30              | 3"        |
| 40              | 4"        |
| 50              | 5" - Call |
| 60              | 6" - Call |

| Socket Weld Side |                          |
|------------------|--------------------------|
| Code             | Description              |
| W4               | Sch. 40 Pipe (standard)  |
| HT               | Hyd Tube (SAE J524 Type) |
| MP               | Metric Pipe              |
| MT               | Metric Tube              |

### Choose Adapter Size

Replace \*\* with the desired adapter size.

Two different size codes selects step size option.

| Second Size Code |           |
|------------------|-----------|
| Code             | Port Size |
| 07               | ¾"        |
| 10               | 1"        |
| 12               | 1¼"       |
| 15               | 1½"       |
| 20               | 2"        |
| 25               | 2½"       |
| 30               | 3"        |
| 40               | 4"        |
| 50               | 5" - Call |
| 60               | 6" - Call |

| Thread Side |                    |
|-------------|--------------------|
| Code        | Description        |
| S           | SAE ORB (Standard) |
| IU          | ISO6149            |
| B           | BSPP               |

### Alternate Thread Standard

Replace "S" SAE ORB standard thread connection with a choice from the "Thread Side" Table. Please call to confirm price and availability.

### Alternate Weld Connection Standard

Replace the "W4" standard weld connection with a choice from the "Weld Side" table. Please call to confirm price and availability.

| Adapter Material |                  |
|------------------|------------------|
| Code             | Description      |
| 1                | Low Carbon Steel |
| 2                | Stainless Steel  |

Due to our policy of continual product improvement, the specifications in this catalog may change without notice. When designing by spec, please request a certified print.





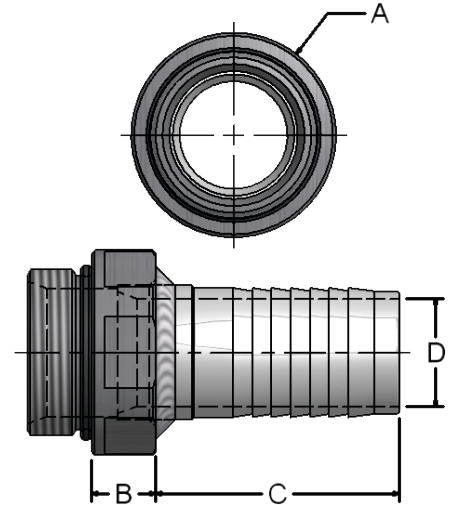
# HBL BARB TO THREAD

Terminate to hose with this O-Ring sealed "staple" adapter



DMIC's **HBL** continues an O-ring sealed pipe run onto a U.S. or metric ID hose. Typically used for a segment from shutoff valve to pump inlet.

- Eliminates classic leakage point of "plumbing" NPT hose barbs, reduces cavitation worries
- Compatibility with SAE and ISO extended size ranges allow end-to-end O-Ring seal to 6" size
- Rapid delivery of stepsize barbs, designers can maintain nominal ID even along hose segments
- Rapid delivery of valves & adapters up to 4" size
- Suction to 400 PSI



| HBL          |               | Hose Barb to SAE/ISO/BSP Thread Inline |               |      |      |      |      |
|--------------|---------------|--|---------------|------|------|------|------|
| Part Number  |               | Port Size                              | Dimensions IN |      |      |      |      |
| SAE          | ISO-6149      |  | A             | B    | C    | D    | Lbs  |
| HBL-07HB-07S | HBL-07HB-07IU | ¾"                                     | 1.38          | 0.63 | 1.82 | 0.63 | 0.40 |
| HBL-10HB-10S | HBL-10HB-10IU | 1"                                     | 1.76          | 0.63 | 1.81 | 0.88 | 0.50 |
| HBL-12HB-12S | HBL-12HB-12IU | 1¼"                                    | 2.00          | 0.63 | 2.38 | 1.05 | 0.70 |
| HBL-15HB-15S | HBL-15HB-15IU | 1½"                                    | 2.25          | 0.63 | 2.38 | 1.29 | 0.90 |
| HBL-20HB-20S | HBL-20HB-20IU | 2"                                     | 2.75          | 0.63 | 2.82 | 1.75 | 1.40 |
| HBL-25HB-25S | HBL-25HB-25IU | 2½"                                    | 3.38          | 0.63 | 3.38 | 2.25 | 2.00 |
| HBL-30HB-30S | HBL-30HB-30IU | 3"                                     | 4.00          | 0.75 | 3.88 | 2.75 | 3.00 |
| HBL-40HB-40S | HBL-40HB-40IU | 4"                                     | 5.00          | 0.75 | 4.38 | 3.75 | 4.20 |

## Ordering Codes

**HBL** - **\*\*** **HB** - **\*\*** **S** - **11**

| O-Ring Elastomer |                          |
|------------------|--------------------------|
| Code             | Description              |
| 1                | Buna-N (standard)        |
| 2                | Ethylene Propylene "EPR" |
| 3                | Viton                    |

| First Size Code |           |
|-----------------|-----------|
| Code            | Port Size |
| 07              | ¾"        |
| 10              | 1"        |
| 12              | 1¼"       |
| 15              | 1½"       |
| 20              | 2"        |
| 25              | 2½"       |
| 30              | 3"        |
| 40              | 4"        |
| 50              | 5" - Call |
| 60              | 6" - Call |

| Hose Barb Side |                      |
|----------------|----------------------|
| Code           | Description          |
| HB             | Inch Barb (Standard) |
| HM             | Metric Barb          |

### Choose Adapter Size

Replace \*\* with the desired adapter size.

Two different size codes selects step size option.

| Second Size Code |           |
|------------------|-----------|
| Code             | Port Size |
| 07               | ¾"        |
| 10               | 1"        |
| 12               | 1¼"       |
| 15               | 1½"       |
| 20               | 2"        |
| 25               | 2½"       |
| 30               | 3"        |
| 40               | 4"        |
| 50               | 5" - Call |
| 60               | 6" - Call |

| Thread Side |                    |
|-------------|--------------------|
| Code        | Description        |
| S           | SAE ORB (Standard) |
| IU          | ISO6149            |
| B           | BSP                |

| Adapter Material |                  |
|------------------|------------------|
| Code             | Description      |
| 1                | Low Carbon Steel |
| 2                | Stainless Steel  |

### Alternate Hose Barb Connection Standard

Replace the "HB" inch-barb connection (U.S.A.) with metric barb for export. Please call to confirm price and availability.

### Alternate Thread Standard

Replace the "S" SAE ORB standard thread connection with a choice from the "Thread Side" table. Please call to confirm price and availability.

Due to our policy of continual product improvement, the specifications in this catalog may change without notice. When designing by spec, please request a certified print.



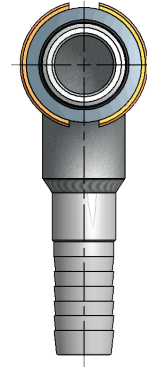
# BSE BARB TO THREAD 90°

Great for smooth radius bends to avoid hose kinking ~ Sizes from 3/4" to 6"

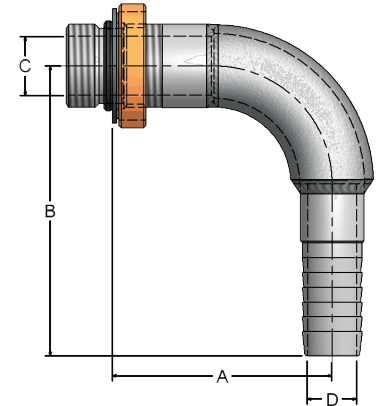


**BSE** is a 90° version of the **HBL** which is particularly useful for L-shaped reservoirs. Swivel ring feature permits precise alignment, eliminating variance in a production environment. Fast delivery up to 4" size.

- Available in SAE / ISO6149 / BSP in sizes up to 6"
- Performance matched with DMIC Ball Valves for low flow restriction and mechanical rigidity
- Results in professional looking power units
- Eliminates leakage point with O-Ring seal up to 6"
- Stepsize model options allow full flow ID with barbs
- Suction to 400 PSI



| <b>BSE</b>   |               | Hose Barb to SAE/ISO/BSP Thread 90° Elbow |               |       |      |      |       |
|--------------|---------------|---|---------------|-------|------|------|-------|
| Part Number  |               | Port Size                                 | Dimensions IN |       |      |      | Lbs   |
| SAE          | ISO-6149      |   | A             | B     | C    | D    |       |
| BSE-07HB-07S | BSE-07HB-07IU | 3/4"                                      | 2.78          | 3.69  | 0.75 | 0.63 | 0.50  |
| BSE-10HB-10S | BSE-10HB-10IU | 1"  | 2.91          | 3.69  | 1.00 | 0.88 | 0.90  |
| BSE-12HB-12S | BSE-12HB-12IU | 1 1/4"                                    | 3.31          | 4.63  | 1.25 | 1.05 | 1.50  |
| BSE-15HB-15S | BSE-15HB-15IU | 1 1/2"                                    | 3.65          | 5.00  | 1.50 | 1.28 | 1.90  |
| BSE-20HB-20S | BSE-20HB-20IU | 2"  | 4.42          | 6.19  | 2.00 | 1.75 | 3.50  |
| BSE-25HB-25S | BSE-25HB-25IU | 2 1/2"                                    | 5.22          | 7.50  | 2.50 | 2.25 | 5.90  |
| BSE-30HB-30S | BSE-30HB-30IU | 3"  | 6.16          | 8.75  | 3.00 | 2.75 | 9.20  |
| BSE-40HB-40S | BSE-40HB-40IU | 4"  | 7.67          | 10.75 | 4.00 | 3.75 | 14.80 |



## Ordering Codes

**BSE** - **\*\*** **HB** - **\*\*** **S** - **1** **1**

| First Size Code |           |
|-----------------|-----------|
| Code            | Port Size |
| 07              | 3/4"      |
| 10              | 1"        |
| 12              | 1 1/4"    |
| 15              | 1 1/2"    |
| 20              | 2"        |
| 25              | 2 1/2"    |
| 30              | 3"        |
| 40              | 4"        |
| 50              | 5" - Call |
| 60              | 6" - Call |

| Hose Barb Side |                      |
|----------------|----------------------|
| Code           | Description          |
| HB             | Inch Barb (Standard) |
| HM             | Metric Barb          |

### Choose Adapter Size

Replace \*\* with the desired adapter size.

Two different size codes selects step size option.

| Second Size Code |           |
|------------------|-----------|
| Code             | Port Size |
| 07               | 3/4"      |
| 10               | 1"        |
| 12               | 1 1/4"    |
| 15               | 1 1/2"    |
| 20               | 2"        |
| 25               | 2 1/2"    |
| 30               | 3"        |
| 40               | 4"        |
| 50               | 5" - Call |
| 60               | 6" - Call |

| Thread Side |                    |
|-------------|--------------------|
| Code        | Description        |
| S           | SAE ORB (Standard) |
| IU          | ISO6149            |
| B           | BSP                |

### Alternate Hose Barb Connection Standard

Replace the "HB" inch-barb connection (U.S.A.) with metric barb for export. Please call to confirm price and availability.

### Alternate Thread Standard

Replace the "S" SAE ORB standard thread connection with a choice from the "Thread Side" table. Please call to confirm price and availability.

| O-Ring Elastomer |                          |
|------------------|--------------------------|
| Code             | Description              |
| 1                | Buna-N (standard)        |
| 2                | Ethylene Propylene "EPR" |
| 3                | Viton                    |

| Adapter Material |                  |
|------------------|------------------|
| Code             | Description      |
| 1                | Low Carbon Steel |
| 2                | Stainless Steel  |

Due to our policy of continual product improvement, the specifications in this catalog may change without notice. When designing by spec, please request a certified print.



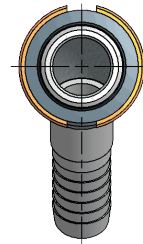
# EBS BARB TO THREAD 45°

Great for smooth radius bends to avoid hose kinking ~ Sizes from 3/4" to 6"

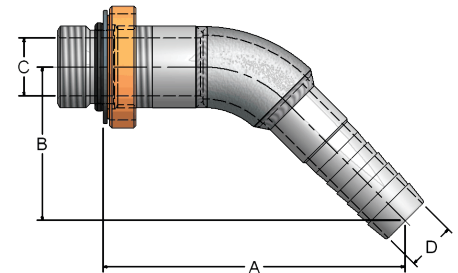


**EBS** is the 45° version of the **HBL** Hose Barb connectors. Useful for flooded suction and overhead reservoir applications.

- Available in SAE / ISO6149 / BSP in sizes up to 6"
- Performance matched with DMIC Ball Valves for low flow restriction and mechanical rigidity
- Results in professional looking power units
- Eliminates leakage point with O-Ring seal up to 6"
- Stepsize model options allow full flow ID with hose barbs - see Dimension D for nominal bore size
- Suction to 400 PSI



| <b>EBS</b>   |               | Hose Barb to SAE/ISO/BSP Thread 90° Elbow |               |      |      |      |       |
|--------------|---------------|---|---------------|------|------|------|-------|
| Part Number  |               | Port Size                                 | Dimensions IN |      |      |      |       |
| SAE          | ISO-6149      |   | A             | B    | C    | D    | Lbs   |
| EBS-07HB-07S | EBS-07HB-07IU | 3/4"                                      | 4.11          | 2.08 | 0.75 | 0.63 | 0.50  |
| EBS-10HB-10S | EBS-10HB-10IU | 1"  | 4.34          | 2.17 | 1.00 | 0.88 | 0.70  |
| EBS-12HB-12S | EBS-12HB-12IU | 1 1/4"                                    | 5.08          | 2.65 | 1.25 | 1.05 | 1.20  |
| EBS-15HB-15S | EBS-15HB-15IU | 1 1/2"                                    | 5.25          | 2.74 | 1.50 | 1.28 | 1.50  |
| EBS-20HB-20S | EBS-20HB-20IU | 2"  | 6.03          | 3.23 | 2.00 | 1.75 | 2.70  |
| EBS-25HB-25S | EBS-25HB-25IU | 2 1/2"                                    | 7.11          | 3.89 | 2.50 | 2.25 | 4.30  |
| EBS-30HB-30S | EBS-30HB-30IU | 3"  | 8.08          | 4.42 | 3.00 | 2.75 | 6.70  |
| EBS-40HB-40S | EBS-40HB-40IU | 4"  | 9.28          | 5.13 | 4.00 | 3.75 | 10.30 |



## Ordering Codes

**EBS** - **\*\*** **HB** - **\*\*** **S** - **1** **1**

| O-Ring Elastomer |                          |
|------------------|--------------------------|
| Code             | Description              |
| 1                | Buna-N (standard)        |
| 2                | Ethylene Propylene "EPR" |
| 3                | Viton                    |

| First Size Code |           |
|-----------------|-----------|
| Code            | Port Size |
| 07              | 3/4"      |
| 10              | 1"        |
| 12              | 1 1/4"    |
| 15              | 1 1/2"    |
| 20              | 2"        |
| 25              | 2 1/2"    |
| 30              | 3"        |
| 40              | 4"        |
| 50              | 5" - Call |
| 60              | 6" - Call |

| Hose Barb Side |                      |
|----------------|----------------------|
| Code           | Description          |
| HB             | Inch Barb (Standard) |
| HM             | Metric Barb          |

### Choose Adapter Size

Replace \*\* with the desired adapter size.

Two different size codes selects step size option.

| Second Size Code |           |
|------------------|-----------|
| Code             | Port Size |
| 07               | 3/4"      |
| 10               | 1"        |
| 12               | 1 1/4"    |
| 15               | 1 1/2"    |
| 20               | 2"        |
| 25               | 2 1/2"    |
| 30               | 3"        |
| 40               | 4"        |
| 50               | 5" - Call |
| 60               | 6" - Call |

| Thread Side |                    |
|-------------|--------------------|
| Code        | Description        |
| S           | SAE ORB (Standard) |
| IU          | ISO6149            |
| B           | BSPP               |

| Adapter Material |                  |
|------------------|------------------|
| Code             | Description      |
| 1                | Low Carbon Steel |
| 2                | Stainless Steel  |

### Alternate Hose Barb Connection Standard

Replace the "HB" inch-barb connection (U.S.A.) with metric barb for export. Please call to confirm price and availability.

### Alternate Thread Standard

Replace the "S" SAE ORB standard thread connection with a choice from the "Thread Side" table. Please call to confirm price and availability.

Due to our policy of continual product improvement, the specifications in this catalog may change without notice. When designing by spec, please request a certified print.



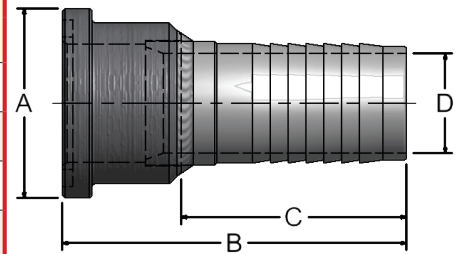
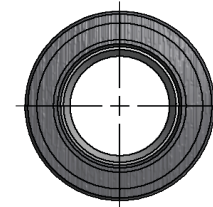
# HBS BARB TO SPLIT FLANGE HEAD

Terminate to hose with this O-Ring sealed "staple" adapter



The **HBS** connector ingeniously permits a reliable O-Ring sealed junction between the inlet hose and SAE 4-Bolt pad components. Designers can have O-Ring sealing end-to-end, from reservoir to pump inlet, even with suction hose runs.

- Offered in all **SSW** to SAE J518 size possibilities, including step size and metric barb options
- Sizes to 6" nominal ID
- Suction to 400 PSI



| HBS           | Barb to SAE Split Flange Head, Inline |           |               |      |      |      |            |
|---------------|---------------------------------------|-----------|---------------|------|------|------|------------|
|               | Part Number                           | Port Size | Dimensions IN |      |      |      | Lbs        |
| SAE           | A                                     |           | B             | C    | D    |      |            |
| HBS-07HB-07SM | ¾"                                    | 1.50      | 3.06          | 1.81 | 0.63 | 0.40 | FSL-0750SK |
| HBS-10HB-10SM | 1"                                    | 1.75      | 3.06          | 1.81 | 0.88 | 0.50 | FSL-1000SK |
| HBS-12HB-12SM | 1¼"                                   | 2.00      | 3.63          | 2.38 | 1.05 | 0.70 | FSL-1250SK |
| HBS-15HB-15SM | 1½"                                   | 2.38      | 3.63          | 2.38 | 1.29 | 0.90 | FSL-1500SK |
| HBS-20HB-20SM | 2"                                    | 2.81      | 4.07          | 2.81 | 1.75 | 1.30 | FSL-2000SK |
| HBS-25HB-25SM | 2½"                                   | 3.31      | 5.13          | 3.38 | 2.25 | 2.00 | FSL-2500SK |
| HBS-30HB-30SM | 3"                                    | 4.00      | 5.75          | 3.88 | 2.75 | 3.00 | FSL-3000SK |
| HBS-40HB-40SM | 4"                                    | 5.00      | 6.13          | 4.38 | 3.75 | 4.00 | FSL-4000SK |

## Ordering Codes

**HBS** - **\*\*** **HB** - **\*\*** **SM** - **1** **1**

| Null                    |             |
|-------------------------|-------------|
| Code                    | Description |
| This code is always "1" |             |

| First Size Code |           |
|-----------------|-----------|
| Code            | Port Size |
| 07              | ¾"        |
| 10              | 1"        |
| 12              | 1¼"       |
| 15              | 1½"       |
| 20              | 2"        |
| 25              | 2½"       |
| 30              | 3"        |
| 40              | 4"        |
| 50              | 5" - Call |
| 60              | 6" - Call |

| Hose Barb Side |                      |
|----------------|----------------------|
| Code           | Description          |
| HB             | Inch Barb (Standard) |
| HM             | Metric Barb          |

**Choose Adapter Size**  
Replace \*\* with the desired adapter size.

Two different size codes selects step size option.

| Second Size Code |           |
|------------------|-----------|
| Code             | Port Size |
| 07               | ¾"        |
| 10               | 1"        |
| 12               | 1¼"       |
| 15               | 1½"       |
| 20               | 2"        |
| 25               | 2½"       |
| 30               | 3"        |
| 40               | 4"        |
| 50               | 5" - Call |
| 60               | 6" - Call |

| Split Flange Side |                        |
|-------------------|------------------------|
| Code              | Description            |
| SM                | C.61 Split Flange Head |

| Adapter Material |                  |
|------------------|------------------|
| Code             | Description      |
| 1                | Low Carbon Steel |
| 2                | Stainless Steel  |

### Metric Hose Barb Connection

Adapters supplied in metric market locales use metric-barb IDs. Please call to confirm price and availability.

Due to our policy of continual product improvement, the specifications in this catalog may change without notice. When designing by spec, please request a certified print.



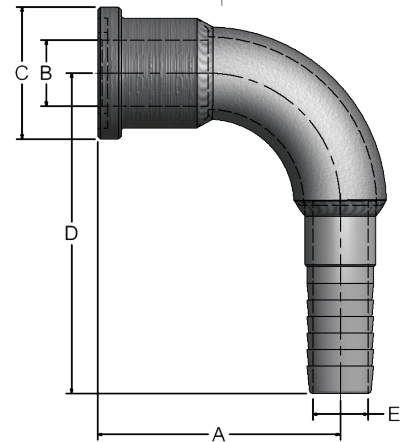
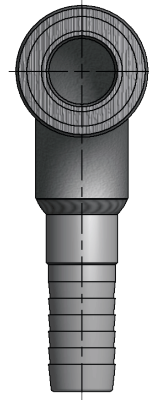
# SBE BARB TO S/F HEAD 90°

## Properly radiused adapter for tight access to pump inlets



The **SBE** 90° split to barb elbows are typically used at the inlet of SAE Flange pumps to terminate a suction hose run. Rugged mechanical construction provides durability at a classic power unit leak point.

- Standard SAE Flange Head mounts with a C.61 Split Flange Kit to your pump's 4-Bolt Companion Pad
- Smooth bend radius aids laminar flow and reduces pressure drop
- Optional oversize barb allows designers to preserve nominal line ID even on the hose segment
- Suction to 400 PSI



| SBE           | Barb to Split Flange, 90° Elbow |           |               |      |       |      |       |            |
|---------------|---------------------------------|-----------|---------------|------|-------|------|-------|------------|
|               | Part Number                     | Port Size | Dimensions IN |      |       |      |       | Lbs        |
| A             |                                 |           | B             | C    | D     | E    |       |            |
| SBE-07HB-07SM | ¾"                              | 2.75      | 0.75          | 1.50 | 3.69  | 0.63 | 0.70  | FSL-0750SK |
| SBE-10HB-10SM | 1"                              | 2.75      | 1.00          | 1.75 | 3.69  | 0.88 | 1.10  | FSL-1000SK |
| SBE-12HB-12SM | 1¼"                             | 3.13      | 1.25          | 2.00 | 4.63  | 1.05 | 1.50  | FSL-1250SK |
| SBE-15HB-15SM | 1½"                             | 3.50      | 1.50          | 2.38 | 4.95  | 1.29 | 2.00  | FSL-1500SK |
| SBE-20HB-20SM | 2"                              | 4.25      | 2.00          | 2.81 | 6.19  | 1.75 | 3.20  | FSL-2000SK |
| SBE-25HB-25SM | 2½"                             | 5.50      | 2.50          | 3.31 | 7.50  | 2.25 | 5.70  | FSL-2500SK |
| SBE-30HB-30SM | 3"                              | 6.37      | 3.00          | 4.00 | 8.75  | 2.75 | 8.60  | FSL-3000SK |
| SBE-40HB-40SM | 4"                              | 7.75      | 4.00          | 5.00 | 10.75 | 3.75 | 13.80 | FSL-4000SK |

## Ordering Codes

**SBE - \*\* HB - \*\* SM - 1 1**

| Null                    |             |
|-------------------------|-------------|
| Code                    | Description |
| This code is always "1" |             |

| First Size Code |           |
|-----------------|-----------|
| Code            | Port Size |
| 07              | ¾"        |
| 10              | 1"        |
| 12              | 1¼"       |
| 15              | 1½"       |
| 20              | 2"        |
| 25              | 2½"       |
| 30              | 3"        |
| 40              | 4"        |
| 50              | 5" - Call |
| 60              | 6" - Call |

| Hose Barb Side |                      |
|----------------|----------------------|
| Code           | Description          |
| HB             | Inch Barb (Standard) |
| HM             | Metric Barb          |

**Choose Adapter Size**  
Replace \*\* with the desired adapter size.

Two different size codes selects step size option.

| Second Size Code |           |
|------------------|-----------|
| Code             | Port Size |
| 07               | ¾"        |
| 10               | 1"        |
| 12               | 1¼"       |
| 15               | 1½"       |
| 20               | 2"        |
| 25               | 2½"       |
| 30               | 3"        |
| 40               | 4"        |
| 50               | 5" - Call |
| 60               | 6" - Call |

| Split Flange Side |                        |
|-------------------|------------------------|
| Code              | Description            |
| SM                | C.61 Split Flange Head |

| Adapter Material |                  |
|------------------|------------------|
| Code             | Description      |
| 1                | Low Carbon Steel |
| 2                | Stainless Steel  |

### Metric Hose Barb Connection

Adapters supplied in metric market locales use metric-barb IDs. Please call to confirm price and availability.

Due to our policy of continual product improvement, the specifications in this catalog may change without notice. When designing by spec, please request a certified print.



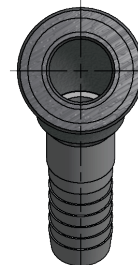
# ESB BARB TO S/F HEAD 45°

## A direct connection to your pump's inlet

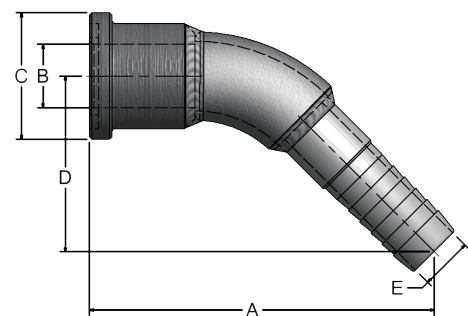


The **ESB** 45° elbows are an elegant routing tool for specific pump to reservoir geometries. Quick order with a Split Flange Kit for a fast and easy solution.

- Standard SAE Flange Head mounts with C.61 Split Flange Kit to your pump's 4-Bolt Companion Pad
- Smooth bend radius aids laminar flow and reduces pressure drop
- Optional oversize barb allows designers to preserve nominal line ID even on the hose segment
- Made in U.S.A. for rapid delivery, even in Stainless Steel
- Suction to 400 PSI



| ESB           | Barb to Split Flange Head, 45° Elbow |           |               |      |      |      |      |            |
|---------------|--------------------------------------|-----------|---------------|------|------|------|------|------------|
|               | Part Number                          | Port Size | Dimensions IN |      |      |      |      | Lbs        |
|               |                                      | A         | B             | C    | D    | E    |      |            |
| ESB-07HB-07SM | ¾"                                   | 4.08      | 0.75          | 1.50 | 2.08 | 0.63 | 0.60 | FSL-0750SK |
| ESB-10HB-10SM | 1"                                   | 4.30      | 1.00          | 1.75 | 2.17 | 0.88 | 0.90 | FSL-1000SK |
| ESB-12HB-12SM | 1¼"                                  | 4.90      | 1.25          | 2.00 | 2.65 | 1.05 | 1.20 | FSL-1250SK |
| ESB-15HB-15SM | 1½"                                  | 5.11      | 1.50          | 2.38 | 2.74 | 1.29 | 1.60 | FSL-1500SK |
| ESB-20HB-20SM | 2"                                   | 5.86      | 2.00          | 2.81 | 3.23 | 1.75 | 2.50 | FSL-2000SK |
| ESB-25HB-25SM | 2½"                                  | 7.39      | 2.50          | 3.31 | 3.89 | 2.25 | 4.30 | FSL-2500SK |
| ESB-30HB-30SM | 3"                                   | 8.29      | 3.00          | 4.00 | 4.42 | 2.75 | 6.40 | FSL-3000SK |
| ESB-40HB-40SM | 4"                                   | 9.38      | 4.00          | 5.00 | 5.13 | 3.75 | 9.60 | FSL-4000SK |



### Ordering Codes

**ESB - \*\* HB - \*\* SM - 1 1**

| Null                    |             |
|-------------------------|-------------|
| Code                    | Description |
| This code is always "1" |             |

| First Size Code |           |
|-----------------|-----------|
| Code            | Port Size |
| 07              | ¾"        |
| 10              | 1"        |
| 12              | 1¼"       |
| 15              | 1½"       |
| 20              | 2"        |
| 25              | 2½"       |
| 30              | 3"        |
| 40              | 4"        |
| 50              | 5" - Call |
| 60              | 6" - Call |

| Hose Barb Side |                      |
|----------------|----------------------|
| Code           | Description          |
| HB             | Inch Barb (Standard) |
| HM             | Metric Barb          |

| Second Size Code |           |
|------------------|-----------|
| Code             | Port Size |
| 07               | ¾"        |
| 10               | 1"        |
| 12               | 1¼"       |
| 15               | 1½"       |
| 20               | 2"        |
| 25               | 2½"       |
| 30               | 3"        |
| 40               | 4"        |
| 50               | 5" - Call |
| 60               | 6" - Call |

| Split Flange Side |                        |
|-------------------|------------------------|
| Code              | Description            |
| SM                | C.61 Split Flange Head |

| Adapter Material |                  |
|------------------|------------------|
| Code             | Description      |
| 1                | Low Carbon Steel |
| 2                | Stainless Steel  |

#### Choose Adapter Size

Replace \*\* with the desired adapter size.

Two different size codes selects step size option.

#### Metric Hose Barb Connection

Adapters supplied in metric market locales use metric-barb IDs. Please call to confirm price and availability.

Due to our policy of continual product improvement, the specifications in this catalog may change without notice. When designing by spec, please request a certified print.



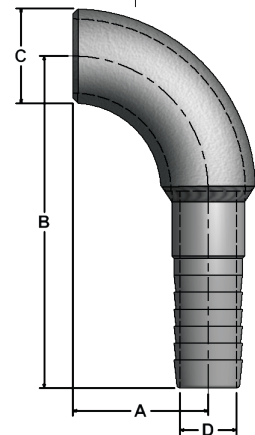
# BBE PREFAB BARB TO 90° ELBOW

Terminate your Sch. 40 pipe run with a professionally made barb



The **BBE** is a ready to use 90° elbow terminated with a genuine DMIC hose barb. This adapter was developed in response to customer requests for an easy way to terminate Sch. 40 pipe runs with a hose barb. Also offered in **EBB** 45° version: See pg. 16.

- Standard based radius and hose barb saves time and money compared to in-house fabrication
- Repeatable results every time
- Available in Stainless Steel
- Available step size barb preserves nominal ID in barb
- Suction to 400 PSI



| BBE            | Prefab Barb to 90° Elbow |               |       |      |      |       |
|----------------|--------------------------|---------------|-------|------|------|-------|
|                | Port Size                | Dimensions IN |       |      |      | Lbs   |
| Part Number    | A                        | B             | C     | D    |      |       |
| BBE-07HB-07WB4 | ¾"                       | 1.50          | 3.69  | 1.05 | 0.63 | 0.30  |
| BBE-10HB-10WB4 | 1"                       | 1.50          | 3.69  | 1.31 | 0.88 | 0.40  |
| BBE-12HB-12WB4 | 1¼"                      | 1.88          | 4.63  | 1.66 | 1.05 | 0.90  |
| BBE-15HB-15WB4 | 1½"                      | 2.25          | 5.00  | 1.91 | 1.28 | 1.30  |
| BBE-20HB-20WB4 | 2"                       | 3.00          | 6.19  | 2.38 | 1.75 | 2.30  |
| BBE-25HB-25WB4 | 2½"                      | 3.75          | 7.50  | 2.88 | 2.25 | 4.30  |
| BBE-30HB-30WB4 | 3"                       | 4.50          | 8.75  | 3.50 | 2.75 | 6.40  |
| BBE-40HB-40WB4 | 4"                       | 6.00          | 10.75 | 4.50 | 3.75 | 11.10 |

## Ordering Codes

**BBE - \*\* HB - \*\* WB4 - 1 1**

| First Size Code |           | Hose Barb Side |                      | Second Size Code |           | Sch.40 Butt Weld |                | Adapter Material |                  |
|-----------------|-----------|----------------|----------------------|------------------|-----------|------------------|----------------|------------------|------------------|
| Code            | Port Size | Code           | Description          | Code             | Port Size | Code             | Description    | Code             | Description      |
| 07              | ¾"        | HB             | Inch Barb (Standard) | 07               | ¾"        | WB4              | Butt Weld Pipe | 1                | Low Carbon Steel |
| 10              | 1"        | HM             | Metric Barb          | 10               | 1"        |                  |                | 2                | Stainless Steel  |
| 12              | 1¼"       |                |                      | 12               | 1¼"       |                  |                |                  |                  |
| 15              | 1½"       |                |                      | 15               | 1½"       |                  |                |                  |                  |
| 20              | 2"        |                |                      | 20               | 2"        |                  |                |                  |                  |
| 25              | 2½"       |                |                      | 25               | 2½"       |                  |                |                  |                  |
| 30              | 3"        |                |                      | 30               | 3"        |                  |                |                  |                  |
| 40              | 4"        |                |                      | 40               | 4"        |                  |                |                  |                  |
| 50              | 5"        |                |                      | 50               | 5" - Call |                  |                |                  |                  |
| 60              | 6"        |                |                      | 60               | 6" - Call |                  |                |                  |                  |

**Null**  
Code Description  
This code is always "1"

**Choose Adapter Size**  
Replace \*\* with the desired adapter size.  
Two different size codes selects step size option.

**Metric Hose Barb Connection**  
Adapters supplied in metric market locales use metric-barb IDs. Please call to confirm price and availability. Not available in U.S.A.

Due to our policy of continual product improvement, the specifications in this catalog may change without notice. When designing by spec, please request a certified print.



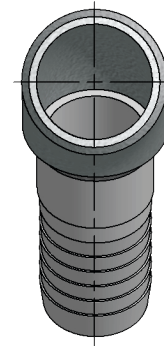
# EBB PREFAB BARB TO 45° ELBOW

## Terminate your Sch. 40 pipe run with a professionally made barb

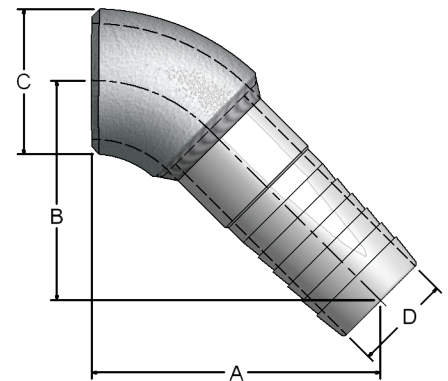


The **EBB** is a ready to use 45° elbow terminated with a genuine DMIC hose barb. This adapter was developed in response to customer requests for an easy way to terminate Sch. 40 pipe runs with a hose barb. Also offered in **BBE** 90° version: See pg. 15.

- Standards based radius and hose barb saves time and money compared to in-house fabrication
- Repeatable results every time
- Available in Stainless Steel
- Available step size barb preserves nominal ID in barb
- Suction to 400 PSI



| EBB            | Prefab Barb to 45° Elbow |           |               |      |      |      |
|----------------|--------------------------|-----------|---------------|------|------|------|
|                | Part Number              | Port Size | Dimensions IN |      |      |      |
| A              |                          |           | B             | C    | D    |      |
| EBB-07HB-07WB4 | ¾"                       | 2.83      | 2.08          | 1.05 | 0.63 | 0.20 |
| EBB-10HB-10WB4 | 1"                       | 3.05      | 2.17          | 1.31 | 0.88 | 0.30 |
| EBB-12HB-12WB4 | 1¼"                      | 3.65      | 2.65          | 1.66 | 1.05 | 0.60 |
| EBB-15HB-15WB4 | 1½"                      | 3.86      | 2.74          | 1.91 | 1.28 | 0.80 |
| EBB-20HB-20WB4 | 2"                       | 4.61      | 3.23          | 2.38 | 1.75 | 1.50 |
| EBB-25HB-25WB4 | 2½"                      | 5.64      | 3.89          | 2.88 | 2.25 | 2.60 |
| EBB-30HB-30WB4 | 3"                       | 6.42      | 4.42          | 3.50 | 2.75 | 3.90 |
| EBB-40HB-40WB4 | 4"                       | 7.63      | 5.13          | 4.50 | 3.75 | 6.60 |



## Ordering Codes

**EBB - \*\* HB - \*\* WB4 - 1 1**

| First Size Code |           | Hose Barb Side |                      | Second Size Code |           | Sch.40 Butt Weld |                | Adapter Material |                  |
|-----------------|-----------|----------------|----------------------|------------------|-----------|------------------|----------------|------------------|------------------|
| Code            | Port Size | Code           | Description          | Code             | Port Size | Code             | Description    | Code             | Description      |
| 07              | ¾"        | HB             | Inch Barb (Standard) | 07               | ¾"        | WB4              | Butt Weld Pipe | 1                | Low Carbon Steel |
| 10              | 1"        | HM             | Metric Barb          | 10               | 1"        |                  |                | 2                | Stainless Steel  |
| 12              | 1¼"       |                |                      | 12               | 1¼"       |                  |                |                  |                  |
| 15              | 1½"       |                |                      | 15               | 1½"       |                  |                |                  |                  |
| 20              | 2"        |                |                      | 20               | 2"        |                  |                |                  |                  |
| 25              | 2½"       |                |                      | 25               | 2½"       |                  |                |                  |                  |
| 30              | 3"        |                |                      | 30               | 3"        |                  |                |                  |                  |
| 40              | 4"        |                |                      | 40               | 4"        |                  |                |                  |                  |
| 50              | 5" - Call |                |                      | 50               | 5" - Call |                  |                |                  |                  |
| 60              | 6" - Call |                |                      | 60               | 6" - Call |                  |                |                  |                  |

**Null**  
Code Description  
This code is always "1"

**Choose Adapter Size**  
Replace \*\* with the desired adapter size.  
Two different size codes selects step size option.

**Metric Hose Barb Connection**  
Adapters supplied in metric market locales use metric-barb IDs. Please call to confirm price and availability. Not available in U.S.A.

Due to our policy of continual product improvement, the specifications in this catalog may change without notice. When designing by spec, please request a certified print.





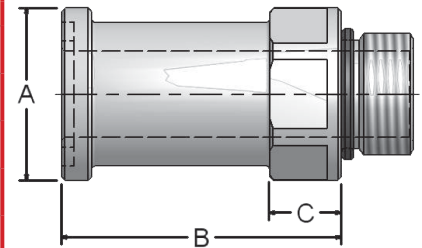
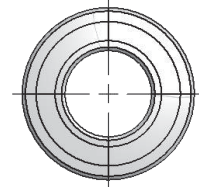
# SFM SPLIT HEAD TO THREAD

## Convert SAE/ISO/BSP ports to Split Flange connection ~ 3/4"-6"



The **SFM** converts a standard or expanded SAE/ISO/BSP port to Code 61 Split Flange Head. Ideal for emergency valve type conversions, and rigid mechanical mounting of valve to components.

- Works with standard SAE J518 split flanges up to **BVAL** working pressure (400 PSI)
- For full pressure service, select **HSFM** (Code 61) or **HSFH** (Code 62) models-call DMIC (Dimensions would stay the same for both models)
- Offered in SAE/ISO6149/BSP standard and expanded port sizes, Made in U.S.A.
- Suction to 400 PSI



| SFM          |               | C.61 Split Flange Head to Thread, Inline |               |      |      |      |                                    |
|--------------|---------------|--|---------------|------|------|------|------------------------------------|
| Part Number  |               | Port Size                                | Dimensions IN |      |      |      | Split Flange Kit (sold separately) |
| SAE          | ISO-6149      |  | A             | B    | C    | Lbs  |                                    |
| SFM-07SM-07S | SFM-07SM-07IU | 3/4"                                     | 1.50          | 2.44 | 0.63 | 0.40 | FSL-0750SK                         |
| SFM-10SM-10S | SFM-10SM-10IU | 1"                                       | 1.75          | 2.40 | 0.63 | 0.60 | FSL-1000SK                         |
| SFM-12SM-12S | SFM-12SM-12IU | 1 1/4"                                   | 2.00          | 2.72 | 0.63 | 0.80 | FSL-1250SK                         |
| SFM-15SM-15S | SFM-15SM-15IU | 1 1/2"                                   | 2.38          | 2.72 | 0.63 | 1.00 | FSL-1500SK                         |
| SFM-20SM-20S | SFM-20SM-20IU | 2"                                       | 2.81          | 2.97 | 0.63 | 1.50 | FSL-2000SK                         |
| SFM-25SM-25S | SFM-25SM-25IU | 2 1/2"                                   | 3.31          | 3.18 | 0.63 | 2.20 | FSL-2500SK                         |
| SFM-30SM-30S | SFM-30SM-30IU | 3"                                       | 4.00          | 3.18 | 0.75 | 3.90 | FSL-3000SK                         |
| SFM-40SM-40S | SFM-40SM-40IU | 4"                                       | 5.00          | 3.44 | 0.75 | 4.90 | FSL-4000SK                         |

### Ordering Codes

**SFM** - **\*\*** **SM** - **\*\*** **S** - **4** **1**

| O-Ring Elastomer |                          |
|------------------|--------------------------|
| Code             | Description              |
| 1                | Buna-N (standard)        |
| 2                | Ethylene Propylene "EPR" |
| 3                | Viton                    |

| First Size Code |           |
|-----------------|-----------|
| Code            | Port Size |
| 07              | 3/4"      |
| 10              | 1"        |
| 12              | 1 1/4"    |
| 15              | 1 1/2"    |
| 20              | 2"        |
| 25              | 2 1/2"    |
| 30              | 3"        |
| 40              | 4"        |
| 50              | 5" - Call |
| 60              | 6" - Call |

| Split Flange Side |                        |
|-------------------|------------------------|
| Code              | Description            |
| SM                | C.61 Split Flange Head |

| Second Size Code |           |
|------------------|-----------|
| Code             | Port Size |
| 07               | 3/4"      |
| 10               | 1"        |
| 12               | 1 1/4"    |
| 15               | 1 1/2"    |
| 20               | 2"        |
| 25               | 2 1/2"    |
| 30               | 3"        |
| 40               | 4"        |
| 50               | 5" - Call |
| 60               | 6" - Call |

| Thread Side |                  |
|-------------|------------------|
| Code        | Description      |
| S           | Swivel SAE-M ORB |
| IU          | Swivel ISO6149-M |
| B           | Swivel BSPP-M    |

| Adapter Material |                     |
|------------------|---------------------|
| Code             | Description         |
| 4                | Aluminum (standard) |
| *2               | Stainless Steel     |
| *1               | Carbon Steel        |

#### Choose Adapter Size

Replace \*\* with the desired adapter size.

Two different size codes selects step size option.

#### Alternate Thread Standard

Replace the "S" SAE ORB standard thread connection with a choice from the "Thread Side" table. Please call to confirm price and availability.

\*NOTE: HSFM or HSFH ONLY

Due to our policy of continual product improvement, the specifications in this catalog may change without notice. When designing by spec, please request a certified print.



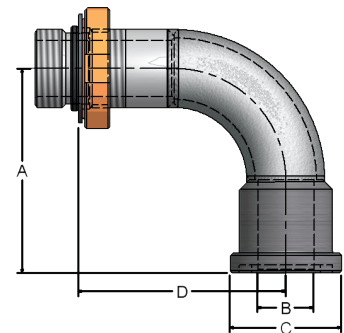
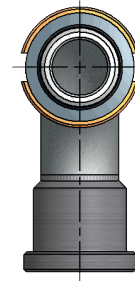
# SSE SPLIT HEAD TO THREAD 90°

Convert SAE/ISO/BSP ports to Split Flange connection ~ 3/4"-6"



The **SSE** provides flexibility of design in O-Ring sealed power unit layout. Rigid mechanical mounting of suspended valves is made simple and repeatable.

- Standard and expanded SAE/ISO6149/BSP connections from 3/4"-6" size
- Engineered in tandem with DMIC **BVAL** valves, there is never a question of compatibility, tolerances, or fit
- Step size versions and stainless steel available
- Suction to 400 PSI
- Made in U.S.A.



| SSE          |               | C.61 Split Flange Head to Thread, 90° Elbow |               |      |      |      |       |                                    |
|--------------|---------------|---|---------------|------|------|------|-------|------------------------------------|
| Part Number  |               | Port Size                                   | Dimensions IN |      |      |      | Lbs   | Split Flange Kit (sold separately) |
| SAE          | ISO-6149      |   | A             | B    | C    | D    |       |                                    |
| SSE-07SM-07S | SSE-07SM-07IU | 3/4"  | 2.75          | 0.75 | 1.50 | 2.79 | 0.70  | FSL-0750SK                         |
| SSE-10SM-10S | SSE-10SM-10IU | 1"  | 2.75          | 1.00 | 1.75 | 2.78 | 1.10  | FSL-1000SK                         |
| SSE-12SM-12S | SSE-12SM-12IU | 1 1/4"                                      | 3.13          | 1.25 | 2.00 | 3.28 | 1.60  | FSL-1250SK                         |
| SSE-15SM-15S | SSE-15SM-15IU | 1 1/2"                                      | 3.50          | 1.50 | 2.38 | 3.68 | 2.10  | FSL-1500SK                         |
| SSE-20SM-20S | SSE-20SM-20IU | 2"  | 4.25          | 2.00 | 2.81 | 4.40 | 3.40  | FSL-2000SK                         |
| SSE-25SM-25S | SSE-25SM-25IU | 2 1/2"                                      | 5.50          | 2.50 | 3.31 | 5.21 | 5.90  | FSL-2500SK                         |
| SSE-30SM-30S | SSE-30SM-30IU | 3"  | 6.38          | 3.00 | 4.00 | 6.15 | 9.50  | FSL-3000SK                         |
| SSE-40SM-40S | SSE-40SM-40IU | 4"  | 7.75          | 4.00 | 5.00 | 7.65 | 14.70 | FSL-4000SK                         |

## Ordering Codes

**SSE - \*\* SM - \*\* S - 1 1**

| First Size Code |           |
|-----------------|-----------|
| Code            | Port Size |
| 07              | 3/4"      |
| 10              | 1"        |
| 12              | 1 1/4"    |
| 15              | 1 1/2"    |
| 20              | 2"        |
| 25              | 2 1/2"    |
| 30              | 3"        |
| 40              | 4"        |
| 50              | 5" - Call |
| 60              | 6" - Call |

| Split Flange Side |                        |
|-------------------|------------------------|
| Code              | Description            |
| SM                | C.61 Split Flange Head |

### Choose Adapter Size

Replace \*\* with the desired adapter size.

Two different size codes selects step size option.

| Second Size Code |           |
|------------------|-----------|
| Code             | Port Size |
| 07               | 3/4"      |
| 10               | 1"        |
| 12               | 1 1/4"    |
| 15               | 1 1/2"    |
| 20               | 2"        |
| 25               | 2 1/2"    |
| 30               | 3"        |
| 40               | 4"        |
| 50               | 5" - Call |
| 60               | 6" - Call |

| Thread Side |                  |
|-------------|------------------|
| Code        | Description      |
| S           | Swivel SAE-M ORB |
| IU          | Swivel ISO6149-M |
| B           | Swivel BSPP-M    |

### Alternate Thread Standard

Replace the "S" SAE ORB standard thread connection with a choice from the "Thread Side" table. Please call to confirm price and availability.

| O-Ring Elastomer |                          |
|------------------|--------------------------|
| Code             | Description              |
| 1                | Buna-N (standard)        |
| 2                | Ethylene Propylene "EPR" |
| 3                | Viton                    |

| Adapter Material |                  |
|------------------|------------------|
| Code             | Description      |
| 1                | Low Carbon Steel |
| 2                | Stainless Steel  |

Due to our policy of continual product improvement, the specifications in this catalog may change without notice. When designing by spec, please request a certified print.



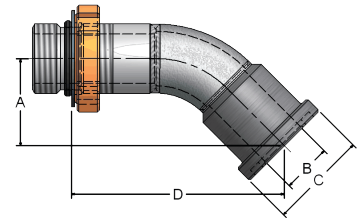
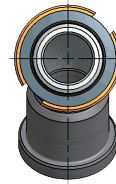
# ESS SPLIT HEAD TO THREAD 45°

Convert SAE/ISO/BSP ports to Split Flange connection ~ 3/4"-6"



The 45° **ESS** compliments the design flexibility introduced by **SSE** (page 18). Rigid mechanical mounting of suspended valves is made simple and repeatable.

- Standard and expanded SAE/ISO6149/BSP connections from 3/4"-6" size
- Engineered in tandem with DMIC **BVAL** valves, there is never a question of compatibility, tolerances, or fit
- Step size versions and stainless steel available
- Suction to 400 PSI
- Made in U.S.A.



| ESS          |               | C.61 Split Flange Head to Thread, 45° Elbow |               |      |      |      |       |            |                                    |
|--------------|---------------|---|---------------|------|------|------|-------|------------|------------------------------------|
| Part Number  |               | Port Size                                   | Dimensions IN |      |      |      |       | Lbs        | Split Flange Kit (sold separately) |
| SAE          | ISO-6149      |   | A             | B    | C    | D    |       |            |                                    |
| ESS-07SM-07S | ESS-07SM-07IU | 3/4"  | 1.41          | 0.75 | 1.50 | 3.45 | 0.60  | FSL-0750SK |                                    |
| ESS-10SM-10S | ESS-10SM-10IU | 1"  | 1.51          | 1.00 | 1.75 | 3.66 | 0.90  | FSL-1000SK |                                    |
| ESS-12SM-12S | ESS-12SM-12IU | 1 1/4"                                      | 1.59          | 1.25 | 2.00 | 4.00 | 1.30  | FSL-1250SK |                                    |
| ESS-15SM-15S | ESS-15SM-15IU | 1 1/2"                                      | 1.68          | 1.50 | 2.38 | 4.20 | 1.70  | FSL-1500SK |                                    |
| ESS-20SM-20S | ESS-20SM-20IU | 2"  | 1.86          | 2.00 | 2.81 | 4.64 | 2.60  | FSL-2000SK |                                    |
| ESS-25SM-25S | ESS-25SM-25IU | 2 1/2"                                      | 2.48          | 2.50 | 3.31 | 5.68 | 4.30  | FSL-2500SK |                                    |
| ESS-30SM-30S | ESS-30SM-30IU | 3"  | 2.74          | 3.00 | 4.00 | 6.39 | 7.00  | FSL-3000SK |                                    |
| ESS-40SM-40S | ESS-40SM-40IU | 4"  | 3.00          | 4.00 | 5.00 | 7.16 | 10.20 | FSL-4000SK |                                    |

## Ordering Codes

**ESS - \*\* SM - \*\* S - 1 1**

| First Size Code |           |
|-----------------|-----------|
| Code            | Port Size |
| 07              | 3/4"      |
| 10              | 1"        |
| 12              | 1 1/4"    |
| 15              | 1 1/2"    |
| 20              | 2"        |
| 25              | 2 1/2"    |
| 30              | 3"        |
| 40              | 4"        |
| 50              | 5" - Call |
| 60              | 6" - Call |

| Split Flange Side |                        |
|-------------------|------------------------|
| Code              | Description            |
| SM                | C.61 Split Flange Head |

**Choose Adapter Size**  
Replace \*\* with the desired adapter size.

Two different size codes selects step size option.

| Second Size Code |           |
|------------------|-----------|
| Code             | Port Size |
| 07               | 3/4"      |
| 10               | 1"        |
| 12               | 1 1/4"    |
| 15               | 1 1/2"    |
| 20               | 2"        |
| 25               | 2 1/2"    |
| 30               | 3"        |
| 40               | 4"        |
| 50               | 5" - Call |
| 60               | 6" - Call |

| Thread Side |                  |
|-------------|------------------|
| Code        | Description      |
| S           | Swivel SAE-M ORB |
| IU          | Swivel ISO6149-M |
| B           | Swivel BSPP-M    |

### Alternate Thread Standard

Replace the "S" SAE ORB standard thread connection with a choice from the "Thread Side" table. Please call to confirm price and availability.

| O-Ring Elastomer |                          |
|------------------|--------------------------|
| Code             | Description              |
| 1                | Buna-N (standard)        |
| 2                | Ethylene Propylene "EPR" |
| 3                | Viton                    |

| Adapter Material |                  |
|------------------|------------------|
| Code             | Description      |
| 1                | Low Carbon Steel |
| 2                | Stainless Steel  |

Due to our policy of continual product improvement, the specifications in this catalog may change without notice. When designing by spec, please request a certified print.



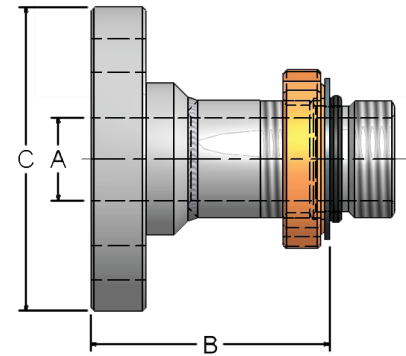
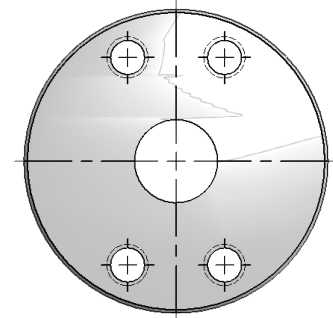
# FMC SAE 4B COMPANION TO THREAD

## Convert low pressure SAE/ISO/BSP thrd to SAE 4-Bolt UNC/Metric



The **FMC** converts a standard or extended thread port to SAE 4-Bolt Companion connection. Useful for emergency valve conversion up to 400 PSI. Available with metric bolt holes and step size flange options.

- Fast and economical conversion to SAE 4-Bolt Companion, UNC (standard) or Metric Bolts
- Reliable mechanical base for your SAE C.61 Split Flange terminated pipe or hose
- Swivel permits proper bolt hole orientation
- Suction to 400 PSI



| FMC          |               | C.61 4B Companion to Thread, Inline |               |      |      |      |
|--------------|---------------|-------------------------------------|---------------|------|------|------|
| Part Number  |               | Port Size                           | Dimensions IN |      |      |      |
| SAE          | ISO-6149      |                                     | A             | B    | C    | Lbs  |
| FMC-07FM-07S | FMC-07FM-07IU | ¾"                                  | 0.75          | 2.16 | 2.75 | 1.10 |
| FMC-10FM-10S | FMC-10FM-10IU | 1"                                  | 1.00          | 2.16 | 3.00 | 1.30 |
| FMC-12FM-12S | FMC-12FM-12IU | 1¼"                                 | 1.25          | 2.28 | 3.38 | 1.70 |
| FMC-15FM-15S | FMC-15FM-15IU | 1½"                                 | 1.50          | 2.24 | 3.75 | 2.10 |
| FMC-20FM-20S | FMC-20FM-20IU | 2"                                  | 2.00          | 2.27 | 4.25 | 2.90 |
| FMC-25FM-25S | FMC-25FM-25IU | 2½"                                 | 2.50          | 2.39 | 4.75 | 4.10 |
| FMC-30FM-30S | FMC-30FM-30IU | 3"                                  | 3.00          | 2.65 | 5.75 | 6.40 |
| FMC-40FM-40S | FMC-40FM-40IU | 4"                                  | 4.00          | 2.59 | 7.00 | 8.60 |

### Ordering Codes

**FMC** - **\*\*** **FM** - **\*\*** **S** - **1** **1**

| First Size Code |           |
|-----------------|-----------|
| Code            | Port Size |
| 07              | ¾"        |
| 10              | 1"        |
| 12              | 1¼"       |
| 15              | 1½"       |
| 20              | 2"        |
| 25              | 2½"       |
| 30              | 3"        |
| 40              | 4"        |
| 50              | 5" - Call |
| 60              | 6" - Call |

| Split Flange Side |                      |
|-------------------|----------------------|
| Code              | Description          |
| FM                | C.61 4B UNC (US Std) |
| GM                | C.61 4B Metric Bolts |
| AA                | ANSI 150 #           |

#### Choose Adapter Size

Replace \*\* with the desired adapter size.

Two different size codes selects step size option.

| Second Size Code |           |
|------------------|-----------|
| Code             | Port Size |
| 07               | ¾"        |
| 10               | 1"        |
| 12               | 1¼"       |
| 15               | 1½"       |
| 20               | 2"        |
| 25               | 2½"       |
| 30               | 3"        |
| 40               | 4"        |
| 50               | 5" - Call |
| 60               | 6" - Call |

| Thread Side |             |
|-------------|-------------|
| Code        | Description |
| S           | SAE ORB     |
| IU          | ISO6149     |
| B           | BSP         |

#### Alternate Fastener Standard

Replace the "FM" C.61 UNC-Bolts Companion code with "GM" C.61 Metric Bolts Companion for metric market applications. Please call to confirm price and availability.

#### Alternate Thread Standard

Replace the "S" SAE ORB standard thread connection with a choice from the "Thread Side" table. Please call to confirm price and availability.

| O-Ring Elastomer |                          |
|------------------|--------------------------|
| Code             | Description              |
| 1                | Buna-N (standard)        |
| 2                | Ethylene Propylene "EPR" |
| 3                | Viton                    |

| Adapter Material |                  |
|------------------|------------------|
| Code             | Description      |
| 1                | Low Carbon Steel |
| 2                | Stainless Steel  |

Due to our policy of continual product improvement, the specifications in this catalog may change without notice. When designing by spec, please request a certified print.



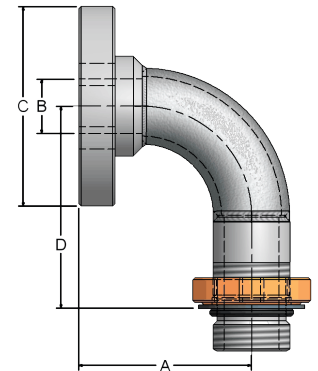
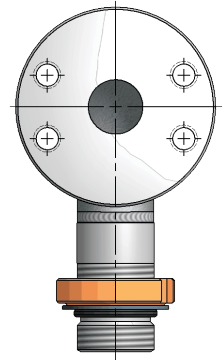
# SFC SAE 4B COMPANION TO THREAD 90°

## The versatility of FMC with an integrated right angle fluid path



The **SFC** converts a standard or extended thread port to SAE 4-Bolt Companion connection with properly radiused 90 degree bend, aiding laminar flow through the fluid direction change. Available in stainless steel.

- Fast and economical conversion to SAE 4-Bolt Companion, UNC (standard) or Metric Bolts
- Reliable mechanical base for your SAE C.61 Split Flange terminated pipe or hose
- Swivel permits proper bolt hole orientation
- Suction to 400 PSI



| SFC          |               | C.61 4B Companion to Thread, 90° Elbow |               |      |      |      |       |
|--------------|---------------|--|---------------|------|------|------|-------|
| Part Number  |               | Port Size                              | Dimensions IN |      |      |      | Lbs   |
| SAE          | ISO-6149      |  | A             | B    | C    | D    |       |
| SFC-07FM-07S | SFC-07FM-07IU | ¾"                                     | 2.38          | 0.75 | 2.75 | 2.79 | 1.30  |
| SFC-10FM-10S | SFC-10FM-10IU | 1"                                     | 2.38          | 1.00 | 3.00 | 2.78 | 1.70  |
| SFC-12FM-12S | SFC-12FM-12IU | 1½"                                    | 2.76          | 1.25 | 3.38 | 3.28 | 2.30  |
| SFC-15FM-15S | SFC-15FM-15IU | 1½"                                    | 3.13          | 1.50 | 3.75 | 3.65 | 2.80  |
| SFC-20FM-20S | SFC-20FM-20IU | 2"                                     | 3.88          | 2.00 | 4.25 | 4.40 | 4.50  |
| SFC-25FM-25S | SFC-25FM-25IU | 2½"                                    | 4.75          | 2.50 | 4.75 | 5.21 | 7.40  |
| SFC-30FM-30S | SFC-30FM-30IU | 3"                                     | 5.50          | 3.00 | 5.75 | 6.15 | 11.40 |
| SFC-40FM-40S | SFC-40FM-40IU | 4"                                     | 7.00          | 4.00 | 7.00 | 7.65 | 17.60 |

## Ordering Codes

**SFC** - **\*\*** **FM** - **\*\*** **S** - **1** **1**

| First Size Code |           |
|-----------------|-----------|
| Code            | Port Size |
| 07              | ¾"        |
| 10              | 1"        |
| 12              | 1½"       |
| 15              | 1½"       |
| 20              | 2"        |
| 25              | 2½"       |
| 30              | 3"        |
| 40              | 4"        |
| 50              | 5" - Call |
| 60              | 6" - Call |

| Split Flange Side |                      |
|-------------------|----------------------|
| Code              | Description          |
| FM                | C.61 4B UNC (US Std) |
| GM                | C.61 4B Metric Bolts |
| AA                | ANSI 150 #           |

### Choose Adapter Size

Replace \*\* with the desired adapter size.

Two different size codes selects step size option.

| Second Size Code |           |
|------------------|-----------|
| Code             | Port Size |
| 07               | ¾"        |
| 10               | 1"        |
| 12               | 1½"       |
| 15               | 1½"       |
| 20               | 2"        |
| 25               | 2½"       |
| 30               | 3"        |
| 40               | 4"        |
| 50               | 5" - Call |
| 60               | 6" - Call |

| Thread Side |                    |
|-------------|--------------------|
| Code        | Description        |
| S           | SAE ORB (Standard) |
| IU          | ISO6149            |
| B           | BSPP               |

### Alternate Fastener Standard

Replace the "FM" C.61 UNC-Bolts Companion code with "GM" C.61 Metric Bolts Companion for metric market applications. Please call to confirm price and availability.

### Alternate Thread Standard

Replace the "S" SAE ORB standard thread connection with a choice from the "Thread Side" table. Please call to confirm price and availability.

| O-Ring Elastomer |                          |
|------------------|--------------------------|
| Code             | Description              |
| 1                | Buna-N (standard)        |
| 2                | Ethylene Propylene "EPR" |
| 3                | Viton                    |

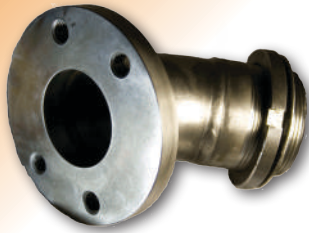
| Adapter Material |                  |
|------------------|------------------|
| Code             | Description      |
| 1                | Low Carbon Steel |
| 2                | Stainless Steel  |

*Due to our policy of continual product improvement, the specifications in this catalog may change without notice. When designing by spec, please request a certified print.*



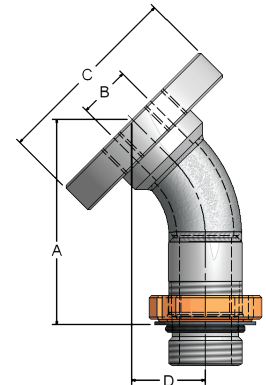
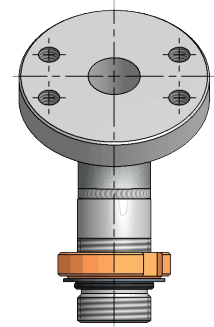
# ESC SAE 4B COMPANION TO THREAD 45°

The exact adapter you need when space is tight ~ SAE/ISO/BSP



The **ESC** is the 45 degree compliment to **FMC** and **SFC**, converting standard/extended threaded ports to SAE 4-Bolt Companion connection. Rigid mechanical characteristics and dimensional repeatability are simplified.

- Fast and economical conversion to SAE 4-Bolt Companion, UNC (standard) or Metric Bolts
- Reliable mechanical base for your SAE C.61 flange terminated pipe or hose
- Swivel permits proper bolt hole orientation
- Suction to 400 PSI



| ESC          |               | C.61 4B Companion to Thread, 45° Elbow |               |      |      |      |       |
|--------------|---------------|--|---------------|------|------|------|-------|
| Part Number  |               | Port Size                              | Dimensions IN |      |      |      | Lbs   |
| SAE          | ISO-6149      |  | A             | B    | C    | D    |       |
| ESC-07FM-07S | ESC-07FM-07IU | ¾"                                     | 3.19          | 0.75 | 2.75 | 1.15 | 1.20  |
| ESC-10FM-10S | ESC-10FM-10IU | 1"                                     | 3.40          | 1.00 | 3.00 | 1.25 | 1.50  |
| ESC-12FM-12S | ESC-12FM-12IU | 1¼"                                    | 3.73          | 1.25 | 3.38 | 1.33 | 2.00  |
| ESC-15FM-15S | ESC-15FM-15IU | 1½"                                    | 3.93          | 1.50 | 3.75 | 1.41 | 2.50  |
| ESC-20FM-20S | ESC-20FM-20IU | 2"                                     | 4.37          | 2.00 | 4.25 | 1.60 | 3.70  |
| ESC-25FM-25S | ESC-25FM-25IU | 2½"                                    | 5.15          | 2.50 | 4.75 | 1.95 | 5.80  |
| ESC-30FM-30S | ESC-30FM-30IU | 3"                                     | 5.77          | 3.00 | 5.75 | 2.12 | 8.90  |
| ESC-40FM-40S | ESC-40FM-40IU | 4"                                     | 6.63          | 4.00 | 7.00 | 2.48 | 13.10 |

## Ordering Codes

**ESC - \*\* FM - \*\* S - 1 1**

| First Size Code |           |
|-----------------|-----------|
| Code            | Port Size |
| 07              | ¾"        |
| 10              | 1"        |
| 12              | 1¼"       |
| 15              | 1½"       |
| 20              | 2"        |
| 25              | 2½"       |
| 30              | 3"        |
| 40              | 4"        |
| 50              | 5" - Call |
| 60              | 6" - Call |

| Split Flange Side |                      |
|-------------------|----------------------|
| Code              | Description          |
| FM                | C.61 4B UNC (US Std) |
| GM                | C.61 4B Metric Bolts |
| AA                | ANSI 150 #           |

### Choose Adapter Size

Replace \*\* with the desired adapter size.

Two different size codes selects step size option.

| Second Size Code |           |
|------------------|-----------|
| Code             | Port Size |
| 07               | ¾"        |
| 10               | 1"        |
| 12               | 1¼"       |
| 15               | 1½"       |
| 20               | 2"        |
| 25               | 2½"       |
| 30               | 3"        |
| 40               | 4"        |
| 50               | 5" - Call |
| 60               | 6" - Call |

| Thread Side |                    |
|-------------|--------------------|
| Code        | Description        |
| S           | SAE ORB (Standard) |
| IU          | ISO6149            |
| B           | BSPP               |

### Alternate Fastener Standard

Replace the "FM" C.61 UNC-Bolts Companion code with "GM" C.61 Metric Bolts Companion for metric market applications. Please call to confirm price and availability.

### Alternate Thread Standard

Replace the "S" SAE ORB standard thread connection with a choice from the "Thread Side" table. Please call to confirm price and availability.

| O-Ring Elastomer |                          |
|------------------|--------------------------|
| Code             | Description              |
| 1                | Buna-N (standard)        |
| 2                | Ethylene Propylene "EPR" |
| 3                | Viton                    |

| Adapter Material |                  |
|------------------|------------------|
| Code             | Description      |
| 1                | Low Carbon Steel |
| 2                | Stainless Steel  |

*Due to our policy of continual product improvement, the specifications in this catalog may change without notice. When designing by spec, please request a certified print.*



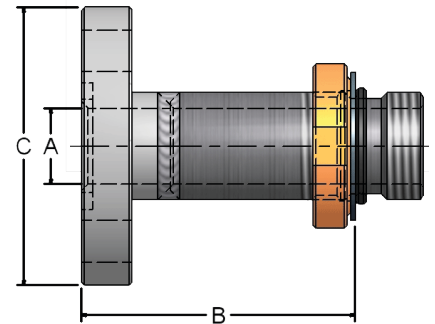
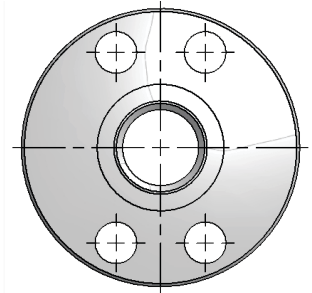
# FMM SAE 4B STANDARD TO THREAD

## Convert low pressure SAE/ISO/BSP thrd to SAE 4-Bolt standard pad



The **FMM** standard flange is adapted from the **FMC** (page 20), but features through bolt-holes and O-Ring groove for a "standard" flange configuration.

- Compatible with UNC and metric bolts
- Fast and economical conversion to SAE 4-Bolt standard flange
- Reliable mechanical base for your SAE C.61 Split Flange terminated pipe or hose
- Swivel permits proper bolt hole orientation
- Made in U.S.A.
- Suction to 400 PSI



| FMM          |               | C.61 4B Standard to Thread, Inline |               |      |      |      |
|--------------|---------------|------------------------------------|---------------|------|------|------|
| Part Number  |               | Port Size                          | Dimensions IN |      |      |      |
| SAE          | ISO-6149      |                                    | A             | B    | C    | Lbs  |
| FMM-07FL-07S | FMM-07FL-07IU | ¾"                                 | 0.75          | 2.71 | 2.75 | 1.10 |
| FMM-10FL-10S | FMM-10FL-10IU | 1"                                 | 1.00          | 2.71 | 3.00 | 1.40 |
| FMM-12FL-12S | FMM-12FL-12IU | 1½"                                | 1.25          | 2.83 | 3.38 | 1.80 |
| FMM-15FL-15S | FMM-15FL-15IU | 1½"                                | 1.50          | 2.80 | 3.75 | 2.30 |
| FMM-20FL-20S | FMM-20FL-20IU | 2"                                 | 2.00          | 3.08 | 4.25 | 3.30 |
| FMM-25FL-25S | FMM-25FL-25IU | 2½"                                | 2.50          | 3.26 | 4.75 | 4.70 |
| FMM-30FL-30S | FMM-30FL-30IU | 3"                                 | 3.00          | 3.84 | 5.75 | 6.70 |
| FMM-40FL-40S | FMM-40FL-40IU | 4"                                 | 4.00          | 3.84 | 7.00 | 9.00 |

## Ordering Codes

**FMM** - **\*\*** **FL** - **\*\*** **S** - **1** **1**

| First Size Code |           |
|-----------------|-----------|
| Code            | Port Size |
| 07              | ¾"        |
| 10              | 1"        |
| 12              | 1½"       |
| 15              | 1½"       |
| 20              | 2"        |
| 25              | 2½"       |
| 30              | 3"        |
| 40              | 4"        |
| 50              | 5" - Call |
| 60              | 6" - Call |

| Split Flange Side |                        |
|-------------------|------------------------|
| Code              | Description            |
| FL                | C.61 4B Std. Universal |
| AA                | ANSI 150 #             |

**Choose Adapter Size**  
Replace \*\* with the desired adapter size.

Two different size codes selects step size option.

| Second Size Code |           |
|------------------|-----------|
| Code             | Port Size |
| 07               | ¾"        |
| 10               | 1"        |
| 12               | 1½"       |
| 15               | 1½"       |
| 20               | 2"        |
| 25               | 2½"       |
| 30               | 3"        |
| 40               | 4"        |
| 50               | 5" - Call |
| 60               | 6" - Call |

| Thread Side |                    |
|-------------|--------------------|
| Code        | Description        |
| S           | SAE ORB (Standard) |
| IU          | ISO6149            |
| B           | BSPP               |

### Universal Bolt Holes

The SAE 4-Bolt standard pad is drilled nominally oversize to permit the use of UNC or Metric bolts.

### Alternate Thread Standard

Replace the "S" SAE ORB standard thread connection with a choice from the "Thread Side" table. Please call to confirm price and availability.

| O-Ring Elastomer |                          |
|------------------|--------------------------|
| Code             | Description              |
| 1                | Buna-N (standard)        |
| 2                | Ethylene Propylene "EPR" |
| 3                | Viton                    |

| Adapter Material |                  |
|------------------|------------------|
| Code             | Description      |
| 1                | Low Carbon Steel |
| 2                | Stainless Steel  |

*Due to our policy of continual product improvement, the specifications in this catalog may change without notice. When designing by spec, please request a certified print.*



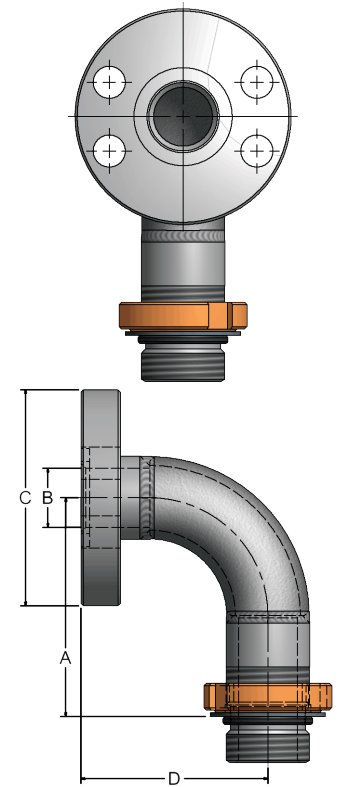
# SFE SAE 4B STANDARD TO THREAD 90°

## Convert low pressure SAE/ISO/BSP thrd to SAE 4-Bolt standard pad



The **SFE** converts standard/extended threaded ports to SAE 4-Bolt Standard connection with properly radiused 90 degree bend, aiding laminar flow through the fluid direction change. Available in Stainless Steel.

- Fast and economical conversion to SAE 4-Bolt standard, fits UNC (imperial) and Metric Bolts
- Reliable mechanical base for your SAE C.61 Split Flange terminated pipe or hose
- Swivel permits proper adapter orientation
- Suction to 400 PSI



| SFE          |               | C.61 4B Standard to SAE/ISO/BSP Thread 90° |               |      |      |      |       |
|--------------|---------------|--|---------------|------|------|------|-------|
| Part Number  |               | Port Size                                  | Dimensions IN |      |      |      |       |
| SAE          | ISO-6149      |  | A             | B    | C    | D    | Lbs   |
| SFE-07FL-07S | SFE-07FL-07IU | ¾"   | 2.79          | 0.75 | 2.75 | 2.38 | 1.30  |
| SFE-10FL-10S | SFE-10FL-10IU | 1"   | 2.78          | 1.00 | 3.00 | 2.38 | 1.70  |
| SFE-12FL-12S | SFE-12FL-12IU | 1½"  | 3.28          | 1.25 | 3.38 | 2.76 | 2.30  |
| SFE-15FL-15S | SFE-15FL-15IU | 1½"  | 3.65          | 1.50 | 3.75 | 3.13 | 2.80  |
| SFE-20FL-20S | SFE-20FL-20IU | 2"   | 4.40          | 2.00 | 4.25 | 3.88 | 4.50  |
| SFE-25FL-25S | SFE-25FL-25IU | 2½"  | 5.21          | 2.50 | 4.75 | 4.75 | 7.40  |
| SFE-30FL-30S | SFE-30FL-30IU | 3"   | 6.15          | 3.00 | 5.75 | 5.50 | 11.40 |
| SFE-40FL-40S | SFE-40FL-40IU | 4"   | 7.65          | 4.00 | 7.00 | 7.00 | 17.60 |

### Ordering Codes

**SFE - \*\* FL - \*\* S - 1 1**

| First Size Code |           |
|-----------------|-----------|
| Code            | Port Size |
| 07              | ¾"        |
| 10              | 1"        |
| 12              | 1½"       |
| 15              | 1½"       |
| 20              | 2"        |
| 25              | 2½"       |
| 30              | 3"        |
| 40              | 4"        |
| 50              | 5" - Call |
| 60              | 6" - Call |

| Split Flange Side |                        |
|-------------------|------------------------|
| Code              | Description            |
| FL                | C.61 4B Std. Universal |
| AA                | ANSI 150 #             |

**Choose Adapter Size**  
Replace \*\* with the desired adapter size.

Two different size codes selects step size option.

| Second Size Code |           |
|------------------|-----------|
| Code             | Port Size |
| 07               | ¾"        |
| 10               | 1"        |
| 12               | 1½"       |
| 15               | 1½"       |
| 20               | 2"        |
| 25               | 2½"       |
| 30               | 3"        |
| 40               | 4"        |
| 50               | 5" - Call |
| 60               | 6" - Call |

| Thread Side |                    |
|-------------|--------------------|
| Code        | Description        |
| S           | SAE ORB (Standard) |
| IU          | ISO6149            |
| B           | BSPP               |

#### Universal Bolt Holes

The SAE 4-Bolt standard pad is drilled nominally oversize to permit the use of UNC or Metric bolts.

#### Alternate Thread Standard

Replace the "S" SAE ORB standard thread connection with a choice from the "Thread Side" table. Please call to confirm price and availability.

| O-Ring Elastomer |                          |
|------------------|--------------------------|
| Code             | Description              |
| 1                | Buna-N (standard)        |
| 2                | Ethylene Propylene "EPR" |
| 3                | Viton                    |

| Adapter Material |                  |
|------------------|------------------|
| Code             | Description      |
| 1                | Low Carbon Steel |
| 2                | Stainless Steel  |

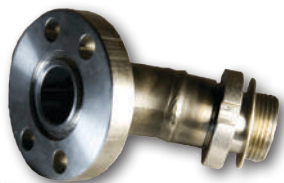
*Due to our policy of continual product improvement, the specifications in this catalog may change without notice. When designing by spec, please request a certified print.*





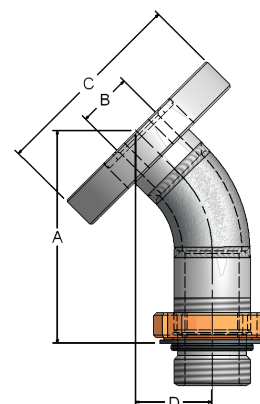
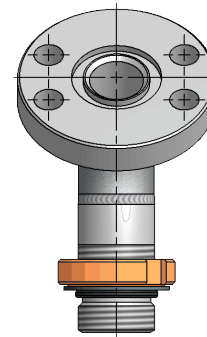
# ESF SAE 4B STANDARD TO THREAD 45°

## Convert low pressure SAE/ISO/BSP thrd to SAE 4-Bolt standard pad



The **ESF** converts standard/extended threaded ports to SAE 4-Bolt Standard connection. Properly radiused 45 degree bend, aiding laminar flow through the fluid direction change. Available in Stainless Steel.

- Fast and economical conversion to SAE 4-Bolt standard, UNC (standard) or Metric Bolts
- Reliable mechanical base for your SAE C.61 Split Flange terminated pipe or hose
- Swivel permits proper bolt hole orientation
- Made in U.S.A., fast delivery of step-size and S/S models
- Suction to 400 PSI



| ESF          |               | C.61 4B Standard to SAE/ISO/BSP Thread 45° |               |      |      |      |       |
|--------------|---------------|--|---------------|------|------|------|-------|
| Part Number  |               | Port Size                                  | Dimensions IN |      |      |      |       |
| SAE          | ISO-6149      |  | A             | B    | C    | D    | Lbs   |
| ESF-07FL-07S | ESF-07FL-07IU | ¾"   | 3.19          | 0.75 | 2.75 | 1.15 | 1.20  |
| ESF-10FL-10S | ESF-10FL-10IU | 1"   | 3.40          | 1.00 | 3.00 | 1.25 | 1.50  |
| ESF-12FL-12S | ESF-12FL-12IU | 1½"  | 3.73          | 1.25 | 3.38 | 1.33 | 2.00  |
| ESF-15FL-15S | ESF-15FL-15IU | 1½"  | 3.93          | 1.50 | 3.75 | 1.41 | 2.50  |
| ESF-20FL-20S | ESF-20FL-20IU | 2"   | 4.37          | 2.00 | 4.25 | 1.60 | 3.70  |
| ESF-25FL-25S | ESF-25FL-25IU | 2½"  | 5.15          | 2.50 | 4.75 | 1.95 | 5.80  |
| ESF-30FL-30S | ESF-30FL-30IU | 3"   | 5.77          | 3.00 | 5.75 | 2.12 | 8.90  |
| ESF-40FL-40S | ESF-40FL-40IU | 4"   | 6.63          | 4.00 | 7.00 | 2.48 | 13.10 |

## Ordering Codes

**ESF** - **\*\*** **FL** - **\*\*** **S** - **1** **1**

| First Size Code |           |
|-----------------|-----------|
| Code            | Port Size |
| 07              | ¾"        |
| 10              | 1"        |
| 12              | 1½"       |
| 15              | 1½"       |
| 20              | 2"        |
| 25              | 2½"       |
| 30              | 3"        |
| 40              | 4"        |
| 50              | 5" - Call |
| 60              | 6" - Call |

| Split Flange Side |                        |
|-------------------|------------------------|
| Code              | Description            |
| FL                | C.61 4B Std. Universal |
| AA                | ANSI 150 #             |

**Choose Adapter Size**  
Replace \*\* with the desired adapter size.

Two different size codes selects step size option.

| Second Size Code |           |
|------------------|-----------|
| Code             | Port Size |
| 07               | ¾"        |
| 10               | 1"        |
| 12               | 1½"       |
| 15               | 1½"       |
| 20               | 2"        |
| 25               | 2½"       |
| 30               | 3"        |
| 40               | 4"        |
| 50               | 5" - Call |
| 60               | 6" - Call |

| Thread Side |                    |
|-------------|--------------------|
| Code        | Description        |
| S           | SAE ORB (Standard) |
| IU          | ISO6149            |
| B           | BSPP               |

### Universal Bolt Holes

The SAE 4-Bolt standard pad is drilled nominally oversize to permit the use of UNC or Metric bolts.

### Alternate Thread Standard

Replace the "S" SAE ORB standard thread connection with a choice from the "Thread Side" table. Please call to confirm price and availability.

| O-Ring Elastomer |                          |
|------------------|--------------------------|
| Code             | Description              |
| 1                | Buna-N (standard)        |
| 2                | Ethylene Propylene "EPR" |
| 3                | Viton                    |

| Adapter Material |                  |
|------------------|------------------|
| Code             | Description      |
| 1                | Low Carbon Steel |
| 2                | Stainless Steel  |

*Due to our policy of continual product improvement, the specifications in this catalog may change without notice. When designing by spec, please request a certified print.*



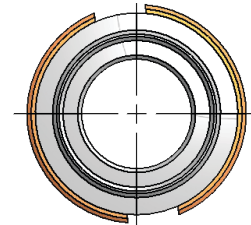
# SNS INT-EXT THREAD SIMPLIFIER

## Three-in-one adapter for leak free reservoir to thread/socket weld

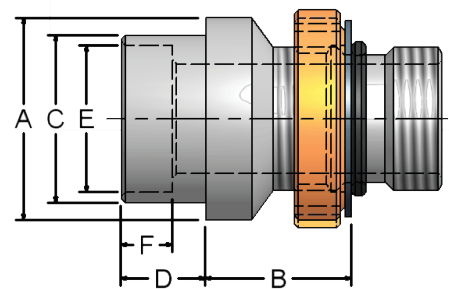


The **SNS** is an ideal solution for the production power unit builder. Weld the SNS below fluid level to your reservoir. An internal thread or Sch.40 socket allows mounting of strainer or baffle pipe. External SAE/ISO/BSP swivel thread permits perfect alignment of shutoff valve – it's a win-win solution for speed and quality.

- Built-in pilot simplifies alignment to reservoir \*
- Standard and expanded SAE/6149/BSP ports
- Choice of thread or socket weld internal connection
- Available in Stainless Steel and special sealing
- Suction to 400 PSI



\* NOTE: There is "NO" pilot on a Female SAE or ISO connection - "C"



| SNS           |               | Suction Line Simplifier, Inline w/Internal Thread |               |      |      |      |                |                |      |
|---------------|---------------|---|---------------|------|------|------|----------------|----------------|------|
| Part Number   |               | Port Size   | Dimensions IN |      |      |      |                |                | Lbs  |
| Threaded Int. | Socket Weld   |   | A             | B    | C    | D    | E<br>(W4 Only) | F<br>(W4 Only) |      |
| SNS-07N-07**  | SNS-07W4-07** | ¾"  | 1.50          | 1.08 | 1.25 | 0.63 | 1.09           | 0.38           | 0.30 |
| SNS-10N-10**  | SNS-10W4-10** | 1"  | 1.75          | 1.21 | 1.50 | 0.63 | 1.35           | 0.38           | 0.40 |
| SNS-12N-12**  | SNS-12W4-12** | 1½"   | 2.13          | 1.33 | 1.88 | 0.75 | 1.70           | 0.50           | 0.70 |
| SNS-15N-15**  | SNS-15W4-15** | 1½"   | 2.38          | 1.46 | 2.13 | 0.75 | 1.95           | 0.50           | 0.90 |
| SNS-20N-20**  | SNS-20W4-20** | 2"  | 2.88          | 1.46 | 2.63 | 0.88 | 2.41           | 0.63           | 1.40 |
| SNS-25N-25**  | SNS-25W4-25** | 2½"   | 3.50          | 1.52 | 3.25 | 1.00 | 2.91           | 0.75           | 2.50 |
| SNS-30N-30**  | SNS-30W4-30** | 3"  | 4.25          | 1.59 | 4.00 | 1.00 | 3.54           | 0.75           | 3.60 |
| SNS-40N-40**  | SNS-40W4-40** | 4"  | 5.25          | 1.59 | 5.00 | 1.00 | 4.54           | 0.75           | 4.50 |

## Ordering Codes

**SNS - \*\* N - \*\* S - 1 1**

| First Size Code |           |
|-----------------|-----------|
| Code            | Port Size |
| 07              | ¾"        |
| 10              | 1"        |
| 12              | 1½"       |
| 15              | 1½"       |
| 20              | 2"        |
| 25              | 2½"       |
| 30              | 3"        |
| 40              | 4"        |
| 50              | 5" - Call |
| 60              | 6" - Call |

| Internal Conn - F |                     |
|-------------------|---------------------|
| Code              | Description         |
| N                 | NPT-F (standard)    |
| S                 | SAE-F ORB           |
| W4                | Sch. 40 Socket Weld |
| B                 | BSPP-F              |
| IU                | ISO6149-F           |

**Choose Adapter Size**  
Replace \*\* with the desired adapter size.

Two different size codes selects step size option.

| Second Size Code |           |
|------------------|-----------|
| Code             | Port Size |
| 07               | ¾"        |
| 10               | 1"        |
| 12               | 1½"       |
| 15               | 1½"       |
| 20               | 2"        |
| 25               | 2½"       |
| 30               | 3"        |
| 40               | 4"        |
| 50               | 5" - Call |
| 60               | 6" - Call |

| External Thread - M |                  |
|---------------------|------------------|
| Code                | Description      |
| S                   | Swivel SAE-M ORB |
| IU                  | Swivel ISO6149-M |
| B                   | Swivel BSPP-M    |

**Alternate Internal Connection (Old SWS type)**  
Replace the "N" NPT-F standard internal connection with a **Sch. 40 Socket Weld** or other option from the "Internal Conn-F" table.

### Alternate External Thread Standard

Replace the "S" SAE-M standard thread connection with a choice from the "External Thread-M" table. Please call to confirm price and availability.

| O-Ring Elastomer |                          |
|------------------|--------------------------|
| Code             | Description              |
| 1                | Buna-N (standard)        |
| 2                | Ethylene Propylene "EPR" |
| 3                | Viton                    |

| Adapter Material |                  |
|------------------|------------------|
| Code             | Description      |
| 1                | Low Carbon Steel |
| 2                | Stainless Steel  |

Due to our policy of continual product improvement, the specifications in this catalog may change without notice. When designing by spec, please request a certified print.



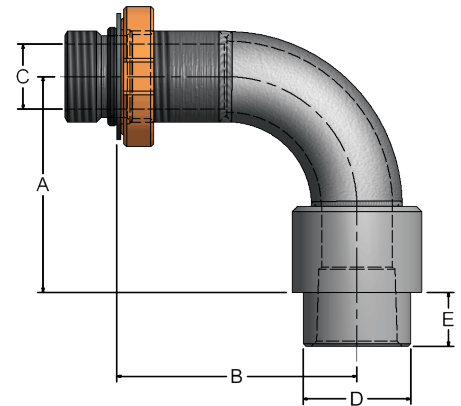
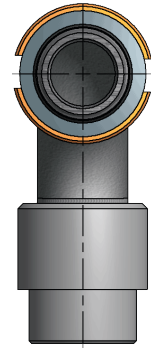
# SNE INT-EXT THREAD SIMPLIFIER 90°

## Three-in-one swivel elbow from reservoir to thread/socket weld



The **SNE** is ideal for placement of inlet valves in mechanically rigid flooded suction positions. Internal thread/socket weld allows mounting of strainer or baffle pipe. External thread with swivel feature permits perfect alignment of shutoff valve.

- Built-in pilot simplifies alignment to reservoir \*
- Standard and expanded SAE/6149/BSP ports
- Choice of thread or socket weld internal connection
- Available in Stainless Steel and special sealing
- Suction to 400 PSI



\* NOTE: There is "NO" pilot on a Female SAE or ISO connection - "D"

| SNE           |               | Suction Line Simplifier, 90° Elbow, w/Internal Thread |               |      |      |      |      |       |
|---------------|---------------|---|---------------|------|------|------|------|-------|
| Part Number   |               | Port Size   | Dimensions IN |      |      |      |      | Lbs   |
| Threaded Int. | Socket Weld   |   | A             | B    | C    | D    | E    |       |
| SNE-07N-07**  | SNE-07W4-07** | ¾"  | 2.50          | 2.78 | 0.75 | 1.25 | 0.63 | 1.00  |
| SNE-10N-10**  | SNE-10W4-10** | 1"  | 2.50          | 2.75 | 1.00 | 1.50 | 0.63 | 1.20  |
| SNE-12N-12**  | SNE-12W4-12** | 1¼"   | 3.01          | 3.28 | 1.25 | 1.87 | 0.75 | 1.90  |
| SNE-15N-15**  | SNE-15W4-15** | 1½"   | 3.38          | 3.68 | 1.50 | 2.12 | 0.75 | 2.40  |
| SNE-20N-20**  | SNE-20W4-20** | 2"  | 4.13          | 4.38 | 2.00 | 2.62 | 0.88 | 3.90  |
| SNE-25N-25**  | SNE-25W4-25** | 2½"   | 5.38          | 5.12 | 2.50 | 3.25 | 1.00 | 7.40  |
| SNE-30N-30**  | SNE-30W4-30** | 3"  | 6.00          | 6.13 | 3.00 | 4.00 | 1.00 | 11.80 |
| SNE-40N-40**  | SNE-40W4-40** | 4"  | 8.00          | 7.69 | 4.00 | 5.00 | 1.00 | 19.00 |

## Ordering Codes

**SNE - \*\* N - \*\* S - 1 1**

| First Size Code |           |
|-----------------|-----------|
| Code            | Port Size |
| 07              | ¾"        |
| 10              | 1"        |
| 12              | 1¼"       |
| 15              | 1½"       |
| 20              | 2"        |
| 25              | 2½"       |
| 30              | 3"        |
| 40              | 4"        |
| 50              | 5" - Call |
| 60              | 6" - Call |

| Internal Conn - F |                     |
|-------------------|---------------------|
| Code              | Description         |
| N                 | NPT-F (standard)    |
| S                 | SAE-F ORB           |
| W4                | Sch. 40 Socket Weld |
| B                 | BSPP-F              |
| IU                | ISO6149-F           |

### Choose Adapter Size

Replace \*\* with the desired adapter size.

Two different size codes selects step size option.

| Second Size Code |           |
|------------------|-----------|
| Code             | Port Size |
| 07               | ¾"        |
| 10               | 1"        |
| 12               | 1¼"       |
| 15               | 1½"       |
| 20               | 2"        |
| 25               | 2½"       |
| 30               | 3"        |
| 40               | 4"        |
| 50               | 5" - Call |
| 60               | 6" - Call |

| External Thread - M |                  |
|---------------------|------------------|
| Code                | Description      |
| S                   | Swivel SAE-M ORB |
| IU                  | Swivel ISO6149-M |
| B                   | Swivel BSPP-M    |

### Alternate Internal Connection (Old SWE type)

Replace the "N" NPT-F standard internal connection with a **Sch. 40 Socket Weld** or other option from the "Internal Conn-F" table.

### Alternate External Thread Standard

Replace the "S" SAE-M standard thread connection with a choice from the "External Thread-M" table. Please call to confirm price and availability.

| O-Ring Elastomer |                          |
|------------------|--------------------------|
| Code             | Description              |
| 1                | Buna-N (standard)        |
| 2                | Ethylene Propylene "EPR" |
| 3                | Viton                    |

| Adapter Material |                  |
|------------------|------------------|
| Code             | Description      |
| 1                | Low Carbon Steel |
| 2                | Stainless Steel  |

Due to our policy of continual product improvement, the specifications in this catalog may change without notice. When designing by spec, please request a certified print.



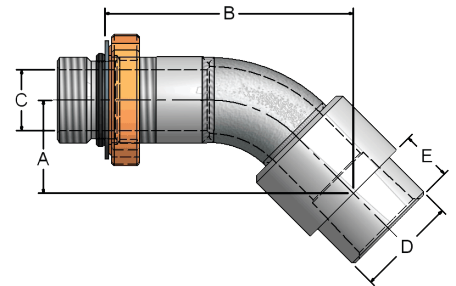
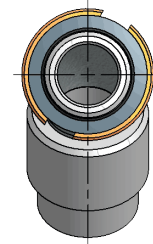
# ESN INT-EXT THREAD SIMPLIFIER 45°

## Three-in-one swivel elbow from reservoir to thread/socket weld



The **ESN** is ideal for placement of inlet valves in mechanically rigid flooded suction positions which are repeatable across power units. Internal thread/socket weld allows mounting of strainer or baffle pipe. External thread with swivel feature permits perfect alignment of shutoff valve.

- Built-in pilot simplifies alignment to reservoir \*
- Standard and expanded SAE/6149/BSP ports
- Choice of thread or socket weld internal connection
- Available in Stainless Steel and special sealing
- Suction to 400 PSI



\* NOTE: There is "NO" pilot on a Female SAE or ISO connection - "D"

| ESN           |               | Suction Line Simplifier, 45° Elbow, w/Internal Thread |               |      |      |      |      |       |
|---------------|---------------|---|---------------|------|------|------|------|-------|
| Part Number   |               | Port Size   | Dimensions IN |      |      |      |      | Lbs   |
| Threaded Int. | Socket Weld   |   | A             | B    | C    | D    | E    |       |
| ESN-07N-07**  | ESN-07W4-07** | ¾"  | 1.24          | 3.27 | 0.75 | 1.25 | 0.63 | 0.90  |
| ESN-10N-10**  | ESN-10W4-10** | 1"  | 1.33          | 3.49 | 1.00 | 1.50 | 0.63 | 1.00  |
| ESN-12N-12**  | ESN-12W4-12** | 1¼"   | 1.50          | 3.90 | 1.25 | 1.87 | 0.75 | 1.60  |
| ESN-15N-15**  | ESN-15W4-15** | 1½"   | 1.59          | 4.11 | 1.50 | 2.12 | 0.75 | 2.00  |
| ESN-20N-20**  | ESN-20W4-20** | 2"  | 1.77          | 4.55 | 2.00 | 2.62 | 0.88 | 3.10  |
| ESN-25N-25**  | ESN-25W4-25** | 2½"   | 2.39          | 5.59 | 2.50 | 3.25 | 1.00 | 5.80  |
| ESN-30N-30**  | ESN-30W4-30** | 3"  | 2.47          | 6.13 | 3.00 | 4.00 | 1.00 | 9.30  |
| ESN-40N-40**  | ESN-40W4-40** | 4"  | 3.18          | 7.33 | 4.00 | 5.00 | 1.00 | 14.50 |

## Ordering Codes

**ESN - \*\* N - \*\* S - 1 1**

| First Size Code |           |
|-----------------|-----------|
| Code            | Port Size |
| 07              | ¾"        |
| 10              | 1"        |
| 12              | 1¼"       |
| 15              | 1½"       |
| 20              | 2"        |
| 25              | 2½"       |
| 30              | 3"        |
| 40              | 4"        |
| 50              | 5" - Call |
| 60              | 6" - Call |

| Internal Conn - F |                     |
|-------------------|---------------------|
| Code              | Description         |
| N                 | NPT-F (standard)    |
| S                 | SAE-F ORB           |
| W4                | Sch. 40 Socket Weld |
| B                 | BSPP-F              |
| IU                | ISO6149-F           |

### Choose Adapter Size

Replace \*\* with the desired adapter size.

Two different size codes selects step size option.

| Second Size Code |           |
|------------------|-----------|
| Code             | Port Size |
| 07               | ¾"        |
| 10               | 1"        |
| 12               | 1¼"       |
| 15               | 1½"       |
| 20               | 2"        |
| 25               | 2½"       |
| 30               | 3"        |
| 40               | 4"        |
| 50               | 5" - Call |
| 60               | 6" - Call |

| External Thread - M |                  |
|---------------------|------------------|
| Code                | Description      |
| S                   | Swivel SAE-M ORB |
| IU                  | Swivel ISO6149-M |
| B                   | Swivel BSPP-M    |

| O-Ring Elastomer |                          |
|------------------|--------------------------|
| Code             | Description              |
| 1                | Buna-N (standard)        |
| 2                | Ethylene Propylene "EPR" |
| 3                | Viton                    |

| Adapter Material |                  |
|------------------|------------------|
| Code             | Description      |
| 1                | Low Carbon Steel |
| 2                | Stainless Steel  |

### Alternate Internal Connection (Old ESW type)

Replace the "N" NPT-F standard internal connection with a **Sch. 40 Socket Weld** or other option from the "Internal Conn-F" table.

### Alternate External Thread Standard

Replace the "S" SAE-M standard thread connection with a choice from the "External Thread-M" table. Please call to confirm price and availability.

Due to our policy of continual product improvement, the specifications in this catalog may change without notice. When designing by spec, please request a certified print.



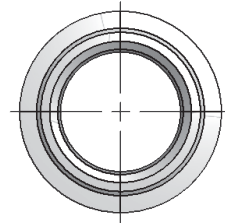
# CSN DOWNLINE ADAPTER W/PILOT

**Facilitates return lines to reservoir ~ Sizes from 3/8" to 2"**

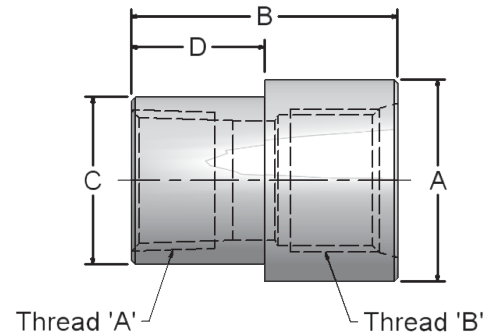


The **CSN** is the downline coupling with a difference - DMIC's original design with pilot facilitates tidy welding to the reservoir. ISO6149 **CSN** adapters are offered to ease the transition for new power unit builders.

- Standard pilot for square placement on reservoir\*
- EZ-Weld material
- Made in U.S.A. rapid delivery
- Suction to 400 PSI



\*NOTE: There is "NO" pilot on a Female SAE or ISO thread - "A"



| CSN         |              | SAE Downline Dual Thread with Pilot |               |      |      |      |      |
|-------------|--------------|-------------------------------------|---------------|------|------|------|------|
| Part Number |              | Port Size                           | Dimensions IN |      |      |      | Lbs  |
| NPT-SAE     | NPT-ISO-6149 |                                     | A             | B    | C    | D    |      |
| CSN-03N-03S | CSN-03N-03IU | 3/8"                                | 0.94          | 1.41 | 0.81 | 0.71 | 0.10 |
| CSN-05N-05S | CSN-05N-05IU | 1/2"                                | 1.13          | 1.72 | 1.00 | 0.86 | 0.20 |
| CSN-07N-07S | CSN-07N-07IU | 3/4"                                | 1.50          | 1.98 | 1.25 | 0.99 | 0.30 |
| CSN-10N-10S | CSN-10N-10IU | 1"                                  | 1.75          | 2.17 | 1.50 | 1.09 | 0.50 |
| CSN-12N-12S | CSN-12N-12IU | 1 1/4"                              | 2.13          | 2.25 | 1.87 | 1.13 | 0.70 |
| CSN-15N-15S | CSN-15N-15IU | 1 1/2"                              | 2.38          | 2.26 | 2.12 | 1.13 | 0.80 |
| CSN-20N-20S | CSN-20N-20IU | 2"                                  | 3.00          | 2.41 | 2.62 | 1.21 | 0.90 |

## Ordering Codes

**CSN - \*\* N - \*\* S - 1 1**

| Null |                         |
|------|-------------------------|
| Code | Description             |
|      | This code is always "1" |

| First Size Code |           |
|-----------------|-----------|
| Code            | Port Size |
| 03              | 3/8"      |
| 05              | 1/2"      |
| 07              | 3/4"      |
| 10              | 1"        |
| 12              | 1 1/4"    |
| 15              | 1 1/2"    |
| 20              | 2"        |

| Thread - A |                     |
|------------|---------------------|
| Code       | Description         |
| N          | NPT-F (standard)    |
| S          | SAE-F ORB           |
| W4         | Sch. 40 Socket Weld |
| B          | BSPP-F              |
| IU         | ISO6149-F           |

### Choose Adapter Size

Replace \*\* with the desired adapter size.

Two different size codes selects step size option.

| Second Size Code |           |
|------------------|-----------|
| Code             | Port Size |
| 03               | 3/8"      |
| 05               | 1/2"      |
| 07               | 3/4"      |
| 10               | 1"        |
| 12               | 1 1/4"    |
| 15               | 1 1/2"    |
| 20               | 2"        |

| Thread - B |                     |
|------------|---------------------|
| Code       | Description         |
| S          | SAE-F (standard)    |
| IU         | ISO6149-F           |
| W4         | Sch. 40 Socket Weld |
| N          | NPT-F               |

| Adapter Material |                  |
|------------------|------------------|
| Code             | Description      |
| 1                | Low Carbon Steel |
| 2                | Stainless Steel  |

### Alternate Thread "A" Selection

Replace the "N" NPT-F standard internal connection with a choice from the "Internal Thread-A" table. Please call to confirm price and availability.

### Alternate Thread "B" Selection

Replace the "S" SAE-F standard thread connection with a choice from the "External Thread-B" table. Please call to confirm price and availability.

*Due to our policy of continual product improvement, the specifications in this catalog may change without notice. When designing by spec, please request a certified print.*



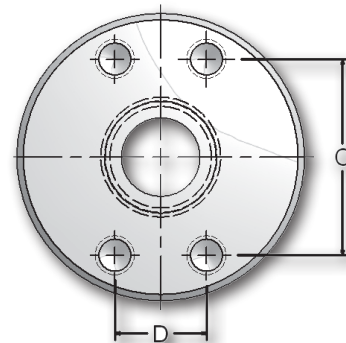
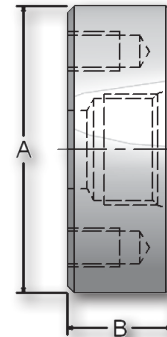
# FCM FLAT WELD SAE 4-B COMPANION

**Facilitates return lines to reservoir ~ Sizes from 3/4" to 6" SAE/ISO/BSP**



The **FCM** is a flat weld SAE 4-Bolt Companion Flange optimized for use as a reservoir outlet connection. An internal thread provides a mounting point for strainer or baffle tube.

- Standard UNC Bolt Holes with NPTF internal port for U.S. Buyers, option of metric bolt holes and BSP, IU, SAE, W4 porting
- An economical way to incorporate professional looking 4-bolt connections on the reservoir
- Available in Stainless Steel
- Suction to 400 PSI



| FCM          |              | Flat Weld Sidewall SAE C.61 Companion |               |      |      |      |       |
|--------------|--------------|---------------------------------------|---------------|------|------|------|-------|
| Part Number  |              | Port Size                             | Dimensions IN |      |      |      | Lbs   |
| NPT          | BSP          |                                       | A             | B    | C    | D    |       |
| FCM-07FM-07N | FCM-07FM-07B | 3/4"                                  | 2.75          | 1.00 | 1.88 | 0.88 | 1.40  |
| FCM-10FM-10N | FCM-10FM-10B | 1"                                    | 3.00          | 1.13 | 2.06 | 1.03 | 1.90  |
| FCM-12FM-12N | FCM-12FM-12B | 1 1/4"                                | 3.25          | 1.13 | 2.31 | 1.19 | 2.10  |
| FCM-15FM-15N | FCM-15FM-15B | 1 1/2"                                | 3.75          | 1.25 | 2.75 | 1.41 | 3.10  |
| FCM-20FM-20N | FCM-20FM-20B | 2"                                    | 4.50          | 1.25 | 3.06 | 1.69 | 3.70  |
| FCM-25FM-25N | FCM-25FM-25B | 2 1/2"                                | 5.00          | 1.25 | 3.50 | 2.00 | 4.10  |
| FCM-30FM-30N | FCM-30FM-30B | 3"                                    | 6.00          | 1.50 | 4.19 | 2.44 | 7.60  |
| FCM-40FM-40N | FCM-40FM-40B | 4"                                    | 7.00          | 1.50 | 5.13 | 3.06 | 10.40 |

## Ordering Codes

**FCM - \*\* FM - \*\* S - 1 1**

| Null |                         |
|------|-------------------------|
| Code | Description             |
|      | This code is always "1" |

| First Size Code |           |
|-----------------|-----------|
| Code            | Port Size |
| 07              | 3/4"      |
| 10              | 1"        |
| 12              | 1 1/4"    |
| 15              | 1 1/2"    |
| 20              | 2"        |
| 25              | 2 1/2"    |
| 30              | 3"        |
| 40              | 4"        |
| 50              | 5" - Call |
| 60              | 6" - Call |

| C.61 Comp Side |                      |
|----------------|----------------------|
| Code           | Description          |
| FM             | C.61 4B UNC (US Std) |
| GM             | C.61 4B Metric Bolts |

**Choose Adapter Size**  
Replace \*\* with the desired adapter size.

Two different size codes selects step size option.

| Second Size Code |           |
|------------------|-----------|
| Code             | Port Size |
| 07               | 3/4"      |
| 10               | 1"        |
| 12               | 1 1/4"    |
| 15               | 1 1/2"    |
| 20               | 2"        |
| 25               | 2 1/2"    |
| 30               | 3"        |
| 40               | 4"        |
| 50               | 5" - Call |
| 60               | 6" - Call |

| Internal Conn-F |                     |
|-----------------|---------------------|
| Code            | Description         |
| N               | NPT-F (standard)    |
| W4              | Sch. 40 Socket Weld |
| S               | SAE-F ORB           |
| IU              | ISO6149-F           |

### Alternate Thread Standard

Replace the "S" SAE ORB standard thread connection with a choice from the "Thread Side" table. Please call to confirm price and availability.

### Alternate Weld Connection Standard

DMIC does not offer any alternate weld connections for the **FCM** model flat weld adapter.

| Adapter Material |                  |
|------------------|------------------|
| Code             | Description      |
| 1                | Low Carbon Steel |
| 2                | Stainless Steel  |

*Due to our policy of continual product improvement, the specifications in this catalog may change without notice. When designing by spec, please request a certified print.*



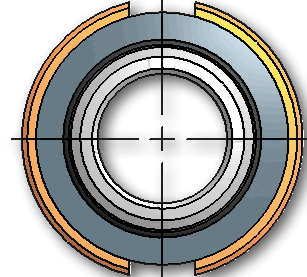
# SFW SWIVEL FLAT WELD TO THREAD

## Flat weld mounts to reservoir ~ Sizes from 3/4" to 6" SAE/ISO/BSP

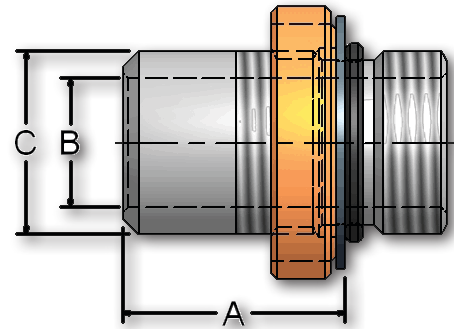


The **SFW** provides similar functionality to the SNS adapters (pg. 26-28) in a flat weld mount style. Available with in SAE O-Ring, ISO6149, and BSP.

- Swivel design with lock ring permits precise alignment on threaded side after weld complete
- Valves can be absent during welding to eliminate contamination and heat damage
- Reduced labor requirement and improved repeatability for both low volume and mass production projects
- Made in USA for fast delivery and top quality
- Suction to 400 PSI



| SFW     |          | Flat Weld to SAE/ISO/BSP Thread, Swivel |               |      |      |      |
|---------|----------|---|---------------|------|------|------|
|         |          | Port Size                               | Dimensions IN |      |      | Lbs  |
| SAE     | ISO-6149 |   | A             | B    | C    |      |
| SFW-07S | SFW-07IU | 3/4"                                    | 1.29          | 0.75 | 1.06 | 0.30 |
| SFW-10S | SFW-10IU | 1"                                      | 1.28          | 1.00 | 1.31 | 0.30 |
| SFW-12S | SFW-12IU | 1 1/4"                                  | 1.40          | 1.25 | 1.63 | 0.60 |
| SFW-15S | SFW-15IU | 1 1/2"                                  | 1.40          | 1.50 | 1.88 | 0.70 |
| SFW-20S | SFW-20IU | 2"                                      | 1.40          | 2.00 | 2.50 | 1.20 |
| SFW-25S | SFW-25IU | 2 1/2"                                  | 1.48          | 2.50 | 3.00 | 1.70 |
| SFW-30S | SFW-30IU | 3"                                      | 1.65          | 3.00 | 4.00 | 2.80 |
| SFW-40S | SFW-40IU | 4"                                      | 1.65          | 4.00 | 5.00 | 3.70 |



## Ordering Codes

**SFW - \*\* S - 1 1**

| Size Code |           |
|-----------|-----------|
| Code      | Port Size |
| 07        | 3/4"      |
| 10        | 1"        |
| 12        | 1 1/4"    |
| 15        | 1 1/2"    |
| 20        | 2"        |
| 25        | 2 1/2"    |
| 30        | 3"        |
| 40        | 4"        |
| 50        | 5" - Call |
| 60        | 6" - Call |

| External Thread-M |                  |
|-------------------|------------------|
| Code              | Description      |
| S                 | Swivel SAE-M ORB |
| IU                | Swivel ISO6149-M |
| B                 | Swivel BSPP-M    |

| Adapter Material |                  |
|------------------|------------------|
| Code             | Description      |
| 1                | Low Carbon Steel |
| 2                | Stainless Steel  |

| Seal Material |                          |
|---------------|--------------------------|
| Code          | Description              |
| 1             | Buna-N (standard)        |
| 2             | Ethylene Propylene "EPR" |
| 3             | Viton                    |

**Choose Adapter Size**  
Replace \*\* with the desired adapter size.

Two different size codes selects step size option.

### Alternate External Thread Standard

Replace the "S" SAE ORB standard thread connection with a choice from the "Thread Side" table. Please call to confirm price and availability.

### Alternate Weld Connection Standard

DMIC does not offer any alternate weld connections for the SFW model adapter. For a Socket Weld variation, see SSW on page 7.

Due to our policy of continual product improvement, the specifications in this catalog may change without notice. When designing by spec, please request a certified print.



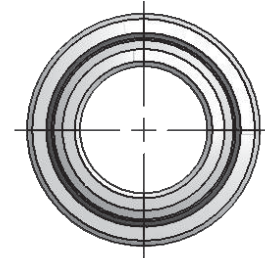
# FFW BASIC FLAT WELD TO THREAD

## Flat weld mounts to reservoir ~ Sizes from 3/4" to 6" SAE/ISO/BSP

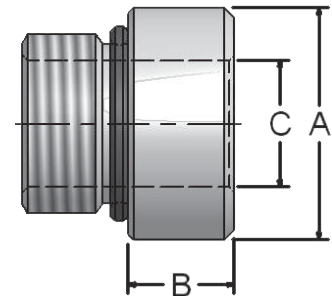


The **FFW Fixed Flat Weld** adapter provides much of the functionality of SFW without the swivel feature. For flat weld applications, see the complete array of Reservoir Weld adapters starting on page 26.

- Valves can be absent during welding to eliminate contamination and heat damage
- Reduced skilled labor requirement and improved repeatability for all skill classes
- Made in USA for fast delivery and top quality in sizes up to 6"
- Suction to 400 PSI



| FFW         |          | Basic Flat Weld to SAE/ISO/BSP Thread |               |      |      |      |
|-------------|----------|---------------------------------------|---------------|------|------|------|
| Part Number |          | Port Size                             | Dimensions IN |      |      |      |
| SAE         | ISO-6149 |                                       | A             | B    | C    | Lbs  |
| FFW-07S     | FFW-07IU | 3/4"                                  | 1.38          | 0.63 | 0.75 | 0.20 |
| FFW-10S     | FFW-10IU | 1"                                    | 1.63          | 0.63 | 1.06 | 0.30 |
| FFW-12S     | FFW-12IU | 1 1/4"                                | 2.00          | 0.63 | 1.25 | 0.40 |
| FFW-15S     | FFW-15IU | 1 1/2"                                | 2.25          | 0.63 | 1.50 | 0.50 |
| FFW-20S     | FFW-20IU | 2"                                    | 2.75          | 0.63 | 2.00 | 0.70 |
| FFW-25S     | FFW-25IU | 2 1/2"                                | 3.38          | 0.63 | 2.50 | 1.00 |
| FFW-30S     | FFW-30IU | 3"                                    | 4.00          | 0.75 | 3.00 | 1.70 |
| FFW-40S     | FFW-40IU | 4"                                    | 5.00          | 0.75 | 4.00 | 2.20 |



## Ordering Codes

**FFW** - **\*\*** **S** - **1** **1**

| Size Code |           |
|-----------|-----------|
| Code      | Port Size |
| 07        | 3/4"      |
| 10        | 1"        |
| 12        | 1 1/4"    |
| 15        | 1 1/2"    |
| 20        | 2"        |
| 25        | 2 1/2"    |
| 30        | 3"        |
| 40        | 4"        |
| 50        | 5" - Call |
| 60        | 6" - Call |

| External Thread-M |                  |
|-------------------|------------------|
| Code              | Description      |
| S                 | Swivel SAE-M ORB |
| IU                | Swivel ISO6149-M |
| B                 | Swivel BSPP-M    |

| Adapter Material |                  |
|------------------|------------------|
| Code             | Description      |
| 1                | Low Carbon Steel |
| 2                | Stainless Steel  |

| O-Ring Elastomer |                          |
|------------------|--------------------------|
| Code             | Description              |
| 1                | Buna-N (standard)        |
| 2                | Ethylene Propylene "EPR" |
| 3                | Viton                    |

**Choose Adapter Size**  
Replace \*\* with the desired adapter size.

### Alternate External Thread Standard

Replace the "S" SAE ORB standard thread connection with a choice from the "Thread Side" table. Please call to confirm price and availability.

### Alternate Weld Connection Standard

DMIC does not offer any alternate weld connections for the **FFW** model adapter. For a Socket Weld variation, see **SSW** on page 7.

*Due to our policy of continual product improvement, the specifications in this catalog may change without notice. When designing by spec, please request a certified print.*





# SVE 90° SWIVEL - SWIVEL

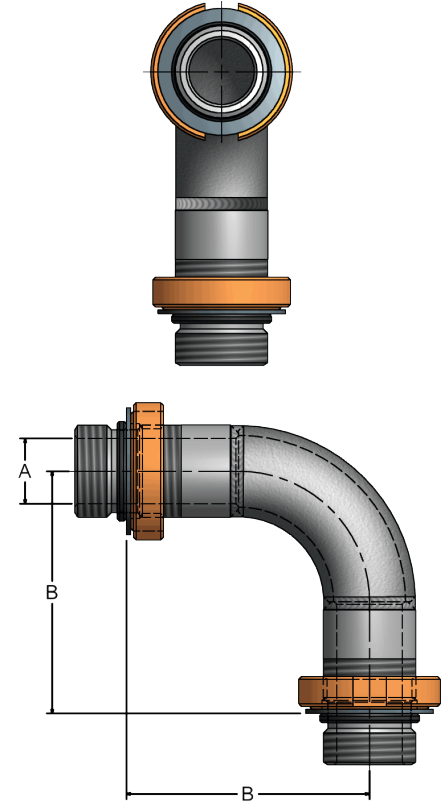
## Male to Male adapter ~ ½ to 6" SAE/BSP



The **SVE** provides flexibility of design in O-Ring sealed power unit layout. Rigid mechanical mounting of suspended valves is made simple and repeatable

- Standard and expanded SAE/ISO6149/BSP connections from ½ - 6" size
- Engineered in tandem with DMIC BVAL valves
- Made in USA for fast delivery and top quality
- Jump Sizes available
- Used to join dissimilar thread 90° types ex. SAE to ISO
- Suction to 400 PSI

| SVE         | Swivel to Swivel |               |      |       |
|-------------|------------------|---------------|------|-------|
|             | Port Size        | Dimensions IN |      |       |
| Part Number |                  | A             | B    | Lbs   |
| SVE-07S-07S | ¾"               | 0.75          | 2.79 | 0.90  |
| SVE-10S-10S | 1"               | 1.00          | 2.79 | 1.20  |
| SVE-12S-12S | 1¼"              | 1.25          | 3.29 | 1.90  |
| SVE-15S-15S | 1½"              | 1.50          | 3.66 | 2.10  |
| SVE-20S-20S | 2"               | 2.00          | 4.41 | 4.30  |
| SVE-25S-25S | 2½"              | 2.50          | 5.22 | 6.70  |
| SVE-30S-30S | 3"               | 3.00          | 6.17 | 11.20 |
| SVE-40S-40S | 4"               | 4.00          | 7.67 | 16.70 |



## Ordering Codes

**SVE - \*\* S - \*\* S - 1 1**

| First Size Code |           |
|-----------------|-----------|
| Code            | Port Size |
| 07              | ¾"        |
| 10              | 1"        |
| 12              | 1¼"       |
| 15              | 1½"       |
| 20              | 2"        |
| 25              | 2½"       |
| 30              | 3"        |
| 40              | 4"        |
| 50              | 5" - Call |
| 60              | 6" - Call |

| External Thread - M |                  |
|---------------------|------------------|
| Code                | Description      |
| S                   | Swivel SAE-M ORB |
| B                   | Swivel BSPP-M    |
| IU                  | Swivel ISO6149-M |

| Second Size Code |           |
|------------------|-----------|
| Code             | Port Size |
| 07               | ¾"        |
| 10               | 1"        |
| 12               | 1¼"       |
| 15               | 1½"       |
| 20               | 2"        |
| 25               | 2½"       |
| 30               | 3"        |
| 40               | 4"        |
| 50               | 5" - Call |
| 60               | 6" - Call |

| External Thread - M |                  |
|---------------------|------------------|
| Code                | Description      |
| S                   | Swivel SAE-M ORB |
| B                   | Swivel BSPP-M    |
| IU                  | Swivel ISO6149-M |

| O-Ring Elastomer |                          |
|------------------|--------------------------|
| Code             | Description              |
| 1                | Buna-N (standard)        |
| 2                | Ethylene Propylene "EPR" |
| 3                | Viton                    |

| Adapter Material |                  |
|------------------|------------------|
| Code             | Description      |
| 1                | Low Carbon Steel |
| 2                | Stainless Steel  |

### Choose Adapter Size

Replace \*\* with the desired adapter size.

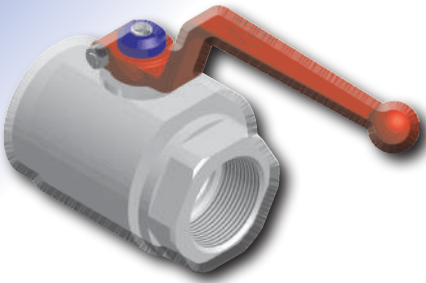
Two different size codes selects step size option.

*Due to our policy of continual product improvement, the specifications in this catalog may change without notice. When designing by spec, please request a certified print.*



# 'BVAL' LOW PRESSURE

**Ideal from suction to 400 PSI; NPT/SAE/6149/BSP ;  
Optimized for DMIC's "SSW" System - All sizes unrestricted bore.**



Most large bore valves sold in the hydraulic market today are simply "plumbing" valves, suitable primarily for low pressure, cold water use. DMIC's 'BVAL' is the first ball valve of its kind, specifically designed for leak-free Hydraulic Suction, Vacuum to 29" & Return line durability to 6" full bore.

- Built to take the pressure spikes, temperatures, & elevated demands of hydraulic service
- Uses top grade ball seals, with O-Ring sealing throughout.
- Suitable for actuation and panel mounting and accepts the full range of DMIC Ball Valve Accessories & Actuation Packages
- A reliable choice for Phosphate Esters, Water Glycols and other unusual media

## Ordering Codes Summary

See [www.DMIC.com](http://www.DMIC.com) for accessory codes

**BVAL** - **\*\*\*\*** **S** - **4** **3** **1** **1** \* \* \* \* \*

| Size Codes |           |
|------------|-----------|
| Code       | Port Size |
| 0250       | ¼"        |
| 0375       | ⅜"        |
| 0500       | ½"        |
| 0750       | ¾"        |
| 1000       | 1"        |
| 1250       | 1¼"       |
| 1500       | 1½"       |
| 2000       | 2"        |
| 2500       | 2½"       |
| 3000       | 3"        |
| 4000       | 4"        |
| 5000       | 5"        |
| 6000       | 6"        |

**Call Factory for larger sizes 8"+**

| Connection Types |                              |
|------------------|------------------------------|
| Imperial Threads |                              |
| Code             | Description                  |
| S                | SAE ORB                      |
| N                | NPT                          |
| Metric Threads   |                              |
| B                | BSPB                         |
| T                | BSPT (Tapered Pipe)          |
| ISO Threads      |                              |
| IU               | ISO6149                      |
| Welded           |                              |
| W4               | Sch. 40 Socket Weld          |
| Flanged          |                              |
| AA               | Class 150# (275 PSI @ 100°F) |
| FM               | C. 61 SAE 4-Bolt UNC         |
| GM               | C.61 SAE 4-Bolt Metric       |
| SM               | C.61 SAE Split               |
| CM               | SAE Flange/Split Combo       |

| O-Ring Material |                   |
|-----------------|-------------------|
| Code            | Description       |
| 1               | Buna-N (Standard) |
| 2               | EPR               |
| 3               | Viton             |

| Seals, Bushings, Washers |                          |
|--------------------------|--------------------------|
| Code                     | Description              |
| 1                        | Delrin                   |
| 2                        | PTFE Teflon              |
| 4                        | High Temp PEEK           |
| 6                        | Delrin AF (Low Friction) |

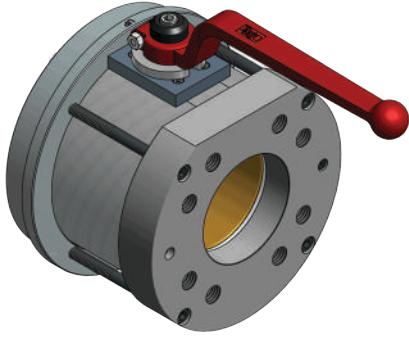
| Ball & Spindle Mat'l |             |
|----------------------|-------------|
| Code                 | Description |
| 3                    | Brass       |

| Body Material |             |
|---------------|-------------|
| Code          | Description |
| 4             | Aluminum    |



# 'BVALP' LOW PROFILE SUCTION

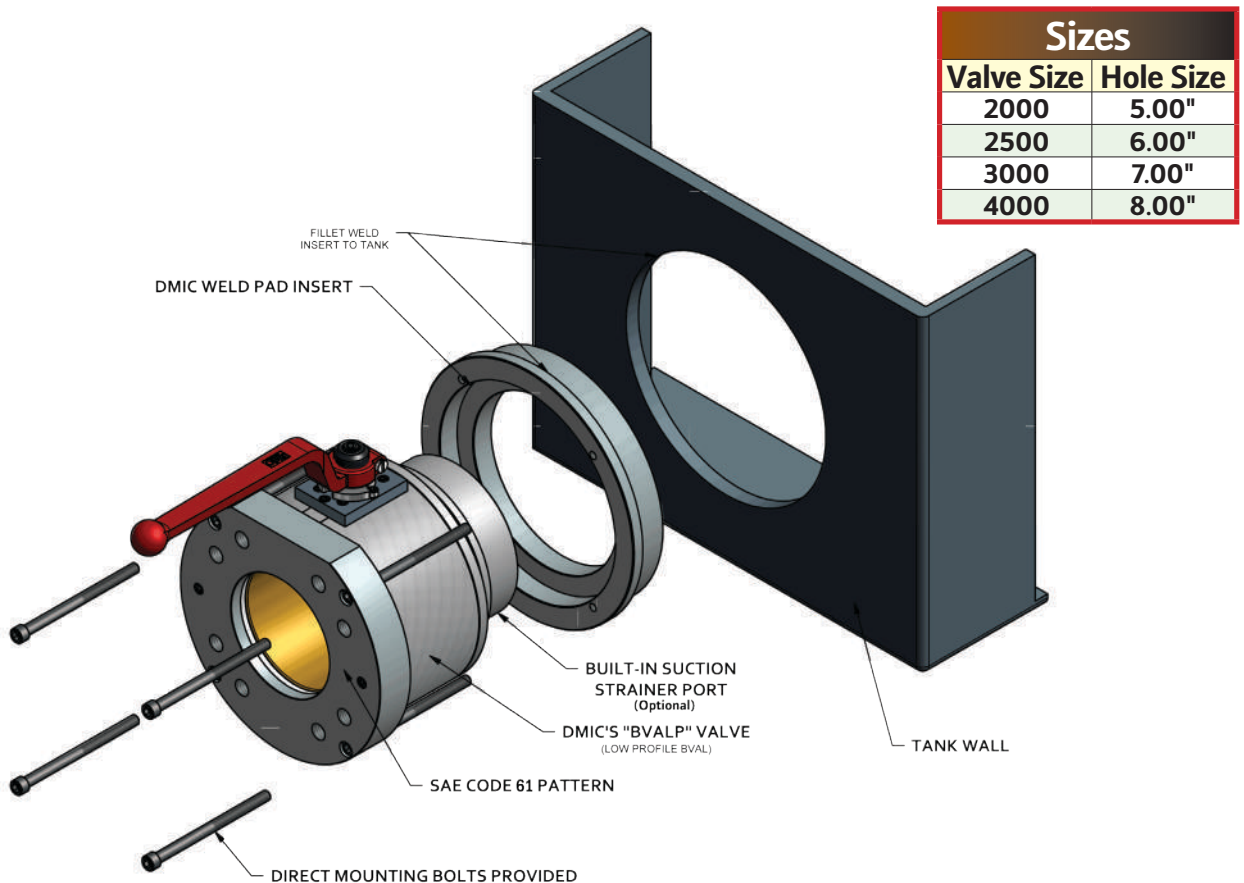
**Ideal from suction to atmospheric pressure**  
**Optimized for DMIC's "SSW" System - All sizes unrestricted bore.**



Similar to DMIC's BVAL product line, but its smaller profile allows for mounting in tight spaces. Whether you're building a new system with a tight space constraint on a valve or are looking to replace your unreliable gate or butterfly valve, make DMIC's BVALP valve your only choice.

- Bore sizes range from 2"-4", other sizes available upon request
- Tank mounted flange for weldment and removable ball valve provided
- Available directly with suction line filter port
- Capable of handling up to 250 PSI
- SAE C.61 Companion Mounting pattern provided (standard) with additional connection availability
- **Special bolt kit required (Sold Separately)**

## Valve Installation Guide



# SAVE TIME AND MONEY WITH THE **DMIC** "SSW" SYSTEM

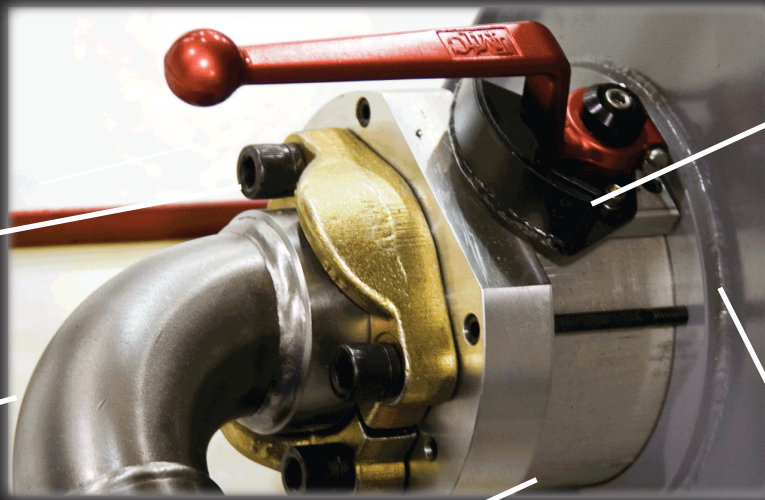
~ The Quality Choice when Safety and Design Integrity Prevail over Price ~

## Split Flange Kits

Fasteners used to mount DMIC flanges in hydraulic applications must be of acceptable grade and only of highest quality. DMIC Factory Hardware Kits are proven, for total safety and peace of mind. Must use DMIC Bolt Kits for FM Pad.

## "SSE" Suction Line Simplifier

Properly radius elbow to aid in laminar flow. SAE swivel provides precise alignment.



**Locking Handle**  
Locking handle accessory available.

## BVALP

Smaller profile allows for mounting in tight spaces. Whether you're building a new system with a tight space constraint on a valve or are looking to replace your unreliable gate or butterfly valve, make DMIC's BVALP valve your only choice.

## BVALP Weld Pad

Tank mounted weld pad available. Internal thread/socket weld allows mounting of strainer or baffle pipe.

*WE CARE ABOUT YOU. You've selected genuine DMIC quality, and you deserve the best service. If you are unsatisfied about some aspect of your experience with DMIC products, or wish to inquire about the possibility of becoming a DMIC Distributor, please call our toll free number below. Your satisfaction is our first priority.*

 Full Member, NFPA  
National Fluid Power  
Association, U.S.A.

 THE FPDA  
MOTION & CONTROL NETWORK

**DMIC** Delaware Manufacturing  
Industries Corporation

 energy **API**

American  
Petroleum  
Institute

 **NACE**  
INTERNATIONAL



3776 Commerce Court  
Wheatfield, NY U.S.A. 14120  
Phone: 716-743-4360  
Fax: 716-743-4370



Nieuwe Uitleg 28  
2514BR The Hague  
Netherlands  
Phone: 31 70 392 1063  
Fax: 31 70 392 1059



330 Vansickle Road—Unit 4  
St. Catharines, Ontario, Canada  
L2R 6P7  
Phone: 905-688-3642  
Fax: 905-688-9993