



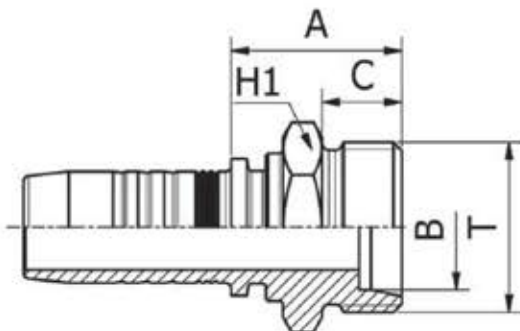
# MULTIFIT TYPE



SAE STANDARD CONNECTIONS

DIN STANDARD CONNECTIONS

## M11110



METRIC MALE 24° CONE SEAT LIGHT DUTY  
DIN 20066 / ISO 12151-2

PART. REF.	HOSE BORE			Thread	Pipe	DIMENSIONS mm					
	DN	Dash	inch			T	B	A	C	H1	
M11110-03-12	5	-3	3/16"	M 12X1.5	6.0	3.0	21.0	10.0	14.0		
M11110-04-12	6	-4	1/4"	M 12X1.5	6.0	4.0	21.5	10.0	14.0		
M11110-04-14	6	-4	1/4"	M 14X1.5	8.0	4.0	21.5	10.0	14.0		
M11110-04-16	6	-4	1/4"	M 16X1.5	10.0	7.0	23.5	11.0	17.0		
M11110-04-18	6	-4	1/4"	M 18X1.5	12.0	9.0	23.5	11.0	19.0		
M11110-05-16	8	-5	5/16"	M 16X1.5	10.0	7.0	24.0	11.0	17.0		
M11110-05-18	8	-5	5/16"	M 18X1.5	12.0	9.0	24.0	11.0	19.0		
M11110-06-16	10	-6	3/8"	M 16X1.5	10.0	7.0	24.0	11.0	17.0		
M11110-06-18	10	-6	3/8"	M 18X1.5	12.0	9.0	24.5	11.0	19.0		
M11110-06-22	10	-6	3/8"	M 22X1.5	15.0	10.0	25.5	12.0	22.0		
M11110-06-26	10	-6	3/8"	M 26X1.5	18.0	12.5	26.5	12.0	27.0		
M11110-08-16	12	-8	1/2"	M 16X1.5	10.0	7.0	24.5	11.0	22.0		
M11110-08-18	12	-8	1/2"	M 18X1.5	12.0	9.3	24.5	11.0	22.0		
M11110-08-22	12	-8	1/2"	M 22X1.5	15.0	10.0	25.5	12.0	22.0		
M11110-08-26	12	-8	1/2"	M 26X1.5	18.0	12.5	26.5	12.0	27.0		
M11110-10-22	16	-10	5/8"	M 22X1.5	15.0	10.0	25.5	12.0	22.0		
M11110-10-26	16	-10	5/8"	M 26X1.5	18.0	12.5	26.5	12.0	27.0		
M11110-10-30	16	-10	5/8"	M 30X2	22.0	15.0	28.5	14.0	30.0		
M11110-12-26	19	-12	3/4"	M 26X1.5	18.0	15.0	28.0	12.0	27.0		
M11110-12-30	19	-12	3/4"	M 30X2	22.0	15.0	30.0	14.0	30.0		
M11110-12-36	19	-12	3/4"	M 36X2	28.0	19.8	31.0	14.0	36.0		
M11110-16-36	25	-16	1"	M 36X2	28.0	19.8	32.5	14.0	36.0		
M11110-20-45	31	-20	1.1/4"	M 45X2	35.0	26.0	40.5	16.0	46.0		
M11110-24-52	38	-24	1.1/2"	M 52X2	42.0	32.0	43.0	16.0	55.0		