



INDUSTRY

k.84

1/4"-2" Full Port Hot Forged Brass Ball Valves



British Gas



Quality:

- 24h 100% seal test guaranteed
- Dual sealing system allows valve to be operated in either direction making installation easier
- No metal-to-metal moving parts
- No maintenance ever required
- Handle clearly shows ball position
- Silicone-free lubricant on all seals
- Chrome plated brass ball for longer life
- Travel stops on body to avoid stresses at stem

Body:

- Hot forged sand blasted, nickel plated brass body and cap sealed with Loctite or equivalent thread sealant
- Valve length according to DIN 3202 M3 Specification
- Finest brass according to EN 12165 and EN 12164 (formerly DIN 17660 and UNI 5705-65) specifications

Stem:

- Blowout-proof nickel plated brass stem
- Two FPM O-rings at the stem for maximum safety

Seals:

- Pure PTFE self-lubricating seats with flexible-lip design

PED Directives:

- Assessment according to Pressure Equipment Directive 97/23 CE module B+D by Pascal (1115)

Threads:

- EN 10226-1, ISO 228 parallel female by female threads

Flow:

- Full port to DIN 3357 for maximum flow

Handle:

- Geomet® carbon steel handle with thick PVC dip coating. Handle coating offers both thermal and electrical protection

Working Pressure:

- 600 PSI non-shock cold working pressure
- For use with dangerous fluids temperature rating is -4°F / +140°F and pressure rating is 70 PSI

Working Temperature:

- -40°F / +350°F Warning: freezing of the fluid in the installation may severely damage the valve

Options:

- Stem extension
- T-handle
- Oval lockable handle
- AISI 430 stainless steel handle
- Patented locking device

Upon Request:

- AISI 316 stainless steel ball and/or stem
- Glass filled PTFE ball seals
- Custom Design



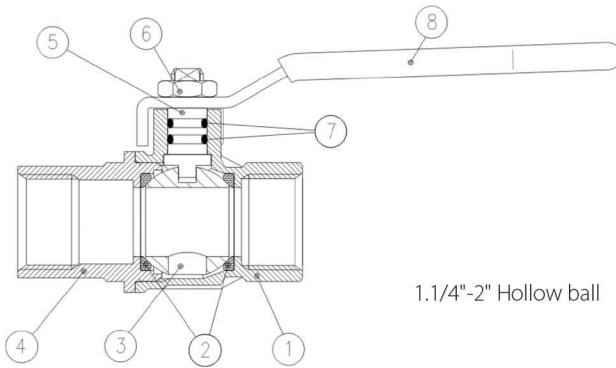


Approved by or in compliance with:

- Danmarks Gasmateriel Provning (DK)
- DVGW (Deutschland)
- SVGW (Swiss)
- British Gas (United Kingdom)
- GOST-R
- Rostekhnadzor

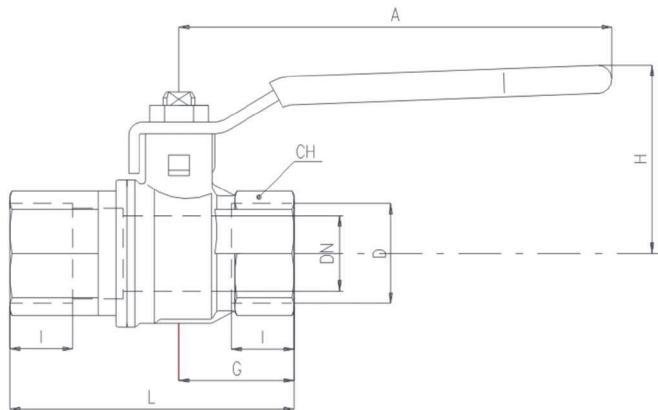
- Hygienic
- UkrSepro
- RoHS Compliant

NOTE: Approvals apply to specific configurations only



1.1/4"-2" Hollow ball

Part Description	Q.ty'	Material
1 Nickel plated body	1	CW617N
2 Ball seat	2	PTFE
3 Chrome plated ball	1	CW617N
4 Nickel plated end cap	1	CW617N
5 Nickel plated stem O-ring design	1	CW617N
6 Geomet® nut	1	CB4FF
7 O-Ring	2	FPM
8 Yellow PVC coated geo-met® steel handle	1	DD11

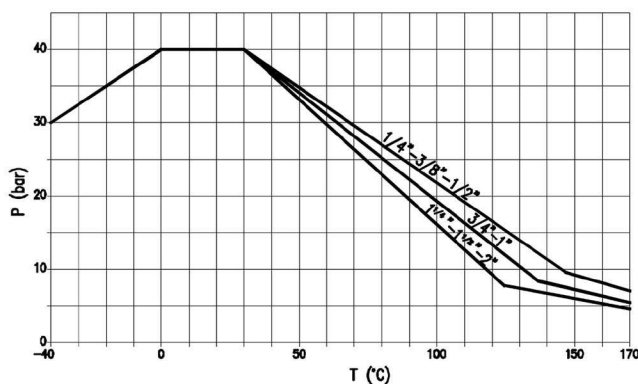


Code	S84B05GW	S84C05GW	S84D05GW	S84E05GW	S84F05GW	S84G05GW	S84H05GW	S84I05GW
D (inch)	1/4	3/8	1/2	3/4	1	1 1/4	1 1/2	2
DN (mm)	8	10	15	20	25	32	40	50
I (mm)	12	12	15.5	17	21	23	23	26.5
L (mm)	50	60	75	80	90	110	120	140
G (mm)	22.5	22.5	29.5	32	40.5	46.5	51	60.5
A (mm)	82	82	100	120	120	158	158	158
H (mm)	38	38	43	50	54	73	79	86
CH (mm)	20	20	25	31	40	49	54	68.5

DN shows the nominal flow diameter. Actual flow diameter complies with full port DIN 3357 part 4.

Ball valves are marked CE on handle from 1.1/4" to 2" as follow: CE 1115 cat IIIB+D PS: 5 GAS TS1: -20°C TS2: +60°C

Pressure-Temperature Chart



Pressure DropChart

